



MIDWEST TECHNOLOGY

WELDING

CATALOG



MobileArc™ Augmented Reality Welding System

Details on page 2



GREAT FOR THE CLASSROOM!

TABLE OF CONTENTS

1	MULTIPROCESS WELDERS
7	STICK WELDERS
9	TIG WELDERS
10	MIG WELDERS
14	WIRE FEEDERS
14	PLASMA CUTTERS
17	OXY-ACETYLENE WELDING KITS
19	ELECTRODE OVENS
20	WELDING SUPPLIES
23	WELDING TOOLS
27	PROTECTIVE EYEWEAR
30	WELDING HELMETS
34	RESPIRATORS
35	FUME EXTRACTORS
37	BENCHES, BOOTHS & CURTAINS
44	WELDING CLOTHES
46	WELDING GLOVES
48	FOUNDRY TOOLS & SUPPLIES

TOP WELDING VENDORS



GET IN CONTACT

 ORDERS@MIDWESTTECHNOLOGY.COM
Available 24/7

 MIDWESTTECHNOLOGY.COM
10,000+ products available online

 800.831.5904 or 712.252.3601
Call our knowledgeable staff

 800.285.7054
Send in our order form or your purchase order

 P.O. BOX 3717, SIOUX CITY, IA 51102
Send us your orders through the mail



WHY MIDWEST?

Selling to the education market often requires navigating through a special set of issues. Midwest Technology Products has made a focused effort to address these barriers to cater to the needs of educators nationwide for over 115 years. We work with a broad network of school purchasers including teachers, administrators, purchasing agents, and curriculum directors. We are also involved in a variety of school-specific vendor programs including preferred vendor listings, cooperative purchasing programs, and competitive bidding.

At Midwest Technology, we support CTE educators across the nation by carrying welding products from reputable brands. View all our available welding products in this digital catalog, and visit our website for pricing.

If you have questions, please don't hesitate to contact us. We'll be happy to help you find exactly what you need, so you're able to provide the best educational experience for your students.

NATIONAL COOPERATIVE CONTRACTS



Midwest has many nationwide contracts and co-ops that enable schools to purchase at negotiated pricing. Contact us today to verify your eligibility for one of these contracts.

MULTIPROCESS WELDERS

Multifunction Laser/Welder



Full Spectrum

Multifunctional tool welds, cuts most metals, and strips paint and rust. Can be used in the hand or quickly mounted to an optional gantry. Use as a CNC laser cutter to cut DXF, SVG, and PDF vector files out of metal. Easily welds/cuts most metals including steel, stainless steel, aluminum, copper, and titanium.

Volts 220. Wattage 1,500. Amps 20. Wire feeder No. Processes aluminum, copper, steel, stainless, titanium. Size 11"W x 22"D x 37"H. Weight 60 lbs.

Includes laser welding gun, workpiece clamp, welding nozzle tips, laser safety glasses, getting started guide and high frequency pulsed laser mode.

416175

Dent Pulling System



LENCO

Any type of pull in any situation. Just weld the star tip to the panel by pressing the trigger, pull, and twist to remove. No more draw pins to cut and grind.

Input Supply Rating 120 Volt AC 60/50 Hertz. Current Rating 20-Amp. Power Input Cable Type 12/3 Wire. Unit size 16-3/4"L x 15"W x 11-1/2"H. Shipping Weight 64 lbs.

499912 - Dent Pulling System **Includes** heat shrinking tip, welding cable and ground cable.

499915 - Service Cart **Includes** casters and 8" wheels.

LENCOSPOT® MARK II® Dual Spot Welder



LENCO

Makes factory-type spot welds in the shop. Simple to operate by pressing the two electrodes against the work and pressing the trigger. Two spot welds are made at one time from a single side. Machine is simple, efficient, and can be used for a variety of light-duty sheet metal applications.

208/230 Volt AC, 60/50 Hertz, 1-Phase. Transformer rating 4 Kilovolt Amp. Line Fuse 50 Amp. Welding Capacity 20 Gauge.

Size 16"L x 11"W x 20-1/2"H. Shipping weight 110 lbs.

499900 - Spot Welder **Includes** 50' power input cable and 5' welding cable.

499930 - Dent Pulling Attachment **Includes** 7' power cable slide hammer, 7' ground clamp/magnetic cable assembly, metal shrinking tip, Allen wrench and 10 Star tips.

Copilot Auto Deltaweld™ 350 Welding System



Miller

This entry-level collaborative welding cell allows for the operator to load and unload from a single station that can be shared with the robot envelope. This is great for new-to-automation welding challenges and for experienced robotic welders who will address high-mix, low-volume operating scenarios. Features AccuGuide positioning control, IntelliSet setting management system and Touch sensing. Tregaskiss® TOUGH GUN® CA3 robotic MIG gun with AccuLock™ consumables is engineered for accurate, reliable, and repeatable performance.

Input Power 208/230/460 V, 3-phase, or 230 V, 1-phase, 60 Hz. Rated Output 350 A at 60% duty cycle. Portability Fork Pockets, casters. Payload Capacity 1,500 lbs. with feet, 750 lbs. with casters. Overall size 48"W x 52"D x 84". Shipping weight 1,700 lbs.

Welding System with Touch Sensing Includes TOUGH GUN® CA3, robotic MIG gun, integrated welding table, tool kit, Touch Sensing and cables.

566345

Welding System with Touch Sensing & Seam Tracking Includes TOUGH GUN® CA3, robotic MIG gun, integrated welding table, tool kit, Touch Sensing, Seam Tracking and cables.

566346

PipeWorx 400 Welder



Miller

Multiprocess pipe welding system delivers more arc-on time, fewer weld defects or rework, superior weld quality, and less training. Includes conventional Stick, DC TIG (Lift-ARC™ or HF Start), Flux-Cored, MIG, RMD®, and Pulsed MIG welding processes. These are optimized to deliver superior arc performance and stability, specifically for root pass, fill, and cap pipe welding. Wind Tunnel Technology™ and Fan-On-Demand™ provide system protection in a dusty shop environment.

Input Voltage 220/230/240V, 460/480V. Input 3-Phase. Rated Carbon Diameter 5/16".

Welder Includes cable hangers, short gas hose and memory card.

567013

Welding System Package Includes PipeWorx Dual Feeder with drive rolls, two MIG Guns, side-mount cable hangers and cable kit with work sense lead.

567056

MobileArc™ Augmented Reality Welding System



Miller

A hands-on augmented reality experience that allows students to get a feel for welding, improve their skills, and make informed career decisions. Designed with ease of use and portability in mind, MobileArc allows students to learn independently, accelerating the overall learning process.

Process MIG (GMAW). Material Type Steel. Joints T, Butt, Lap. Weight 7 lbs.

Includes Mobile device with case, Black Classic helmet, mobile device mount, MIG welding gun, AR nozzle,

mobile device gun mount, workpiece (configurable base plate and top plate), 1.50 magnifying lens, 2.00 magnifying lens, device charger and travel bag.

566394



Click STK number for more information and PRICE

Multimatic® 215 Multiprocess Welder



Miller

Multiprocess capabilities allow for MIG, flux-cored, DC TIG and DC stick welding. Welds material from 24-gauge to 3/8" thick. Intuitive color LCD user interface makes it quick and easy to adjust parameters. Auto-Set™ Elite can be used on multiple materials and multiple processes with the ability to fine tune your settings. The MVP™ plug allows you to connect to 120 or 240V receptacles without tools. Auto Spool Gun Detect™ automatically detects when a MIG gun or spool gun is connected.

Processes: MIG (GMAW), Flux-cored (FCAW), DC TIG (GTAW), DC stick (SMAW). Weld Thickness: MIG: 24 ga. 3/8" steel, 18 ga. 3/8" aluminum, TIG: 24 ga. 1/4" steel, Stick: 16 ga. 3/8" steel. Input: 120 or 230V, 50/60 Hz, 1-phase. Unit size 11.25"W x 20.5"D x 12.45"H. Weight 38 lbs.

Includes 6.5' power cord with MVP plugs for 120V and 240V, 10' M-100 MIG gun and cable assembly, 13' cable electrode holder and 25 mm Dinse-style connector, 10' work cable with clamp and 25 mm Dinse-style connector, Argon and AR/CO2 mix regulator/flow gauge with hose, spool of Hobart® .030" solid wire, 2 contact tips for .030" wire, drive roll for .024" or .030"/.035" solid wire, and .030"/.035" flux cored wire, material thickness gauge and hook-and-loop cord wraps.

566458 **567133** - Includes Contractor Kit.

Multimatic® 220 Multiprocess Welder



Miller

This all-in-one unit gives you the freedom to weld any process including MIG and Stick up to 3/8", or AC and DC TIG up to 1/4" within one portable, powerful, easy-to-use machine. The unit automatically determines polarity, switches to the right process, and recalls settings from the previous session to make setup and workflow fast and easy.

Processes: Flux-Cored (FCAW), MIG (GMAW), Stick (SMAW), TIG (GTAW), TIG AC (GTAW-AC), TIG DC (GTAW-DC). Weld Thickness: MIG: 24 ga.–3/8" steel, 18 ga.–3/8" aluminum, AC/DC TIG: .024 ga.–1/4" steel and aluminum, DC Stick: 16 ga.–3/8" steel. Input Power: 120 or 240V, 50/60 Hz, 1-phase. Unit size 21.5"L x 11.25"W x 17.5"H. Weight: 56 lbs.

Includes 6.5' power cord and adapter plugs, welding gun, 13' cable electrode holder and 25 mm Dinse-style connector, 12.5' torch with 25 mm Dinse-style connector, foot control with 20' cord, 10' work cable with clamp and 25 mm Dinse-style connector, two argon and AR/CO2 mix regulator/flow gauge with hoses, spool of wire, two contact tips for 0.8 mm wire, drive roll for 0.6 mm or 0.8/0.9 mm solid wire, and 0.8/0.9 mm flux cored wire, torch accessory kit, and hook-and-loop cord wraps.

567036

Multimatic® 235 Multiprocess Welder



Miller

Built for professionals in the manufacturing/fabrication, MRO and construction fabrication and education segments, the Multimatic 235 allows welders of all skill levels to be more efficient for all their MIG, flux-cored, stick and DC TIG welding needs. Setup is quick and easy, letting operators have faster up-time and weld with confidence.

Processes MIG (GMAW), Flux-cored (FCAW), DC stick (SMAW) Pulsed TIG (GTAW-P). Input Power 240V, 1 Ph. Rated Output MIG: 170 A at 22.5V, 60% duty cycle, Stick: 150 A at 26V, 60% duty cycle, TIG: 180 A at 17.2V, 60% duty cycle. Amperage Range 20–235 A.

Includes Power source with 7' power cord, 15' 50-amp MDX™-250 MIG gun with Bernard® AccuLock™ MDX consumables for .030/.03" wire, 10' cable with electrode holder and 50 mm Dinse-style connector, 10' work cable with clamp and 50 mm Dinse-style connector, flow gauge regulator and gas hose for argon or AR/CO2 mix, extra contact tips, .030/.035" reversible drive rolls and material thickness gauge.

567037 **567143** - Includes EZ-Latch™ Running Gear.

Miller Multimatic 255 Welder



Miller

Auto-Set™ Elite offers predefined weld settings to increase ease of use and ensure that the job is done right for operators of all skill levels. Program mode allows you to easily save and recall common weld settings for higher productivity and consistent quality by welders of all skill levels with minimal teacher interaction. AccuLock™ liner loads from the front and locks at the front and back to ensure proper alignment for flawless wire feed path.

Processes MIG Stick (SMAW), TIG DC (GTAW-DC), Flux Cored (FCAW), MIG (GMAW), Multiprocess. Input Power 208V, 220/230/240V, 460/480V, 575V, 1 Ph. Input Hz 50/60 Hz. Input Amperage 34.7. Current Type DC. Max Open Circuit Voltage 81 VDC.

Includes power source with 10' cord, 15' 250-amp MDX™-250 MIG gun with Bernard® AccuLock™ MDX consumables for .030/.035" (0.8/0.9 mm) wire, 10' cable with electrode holder and 50 mm Dinse-style connector, 10' work cable with clamp and 50 mm Dinse-style connector, flow gauge regulator and gas hose for argon or AR/CO2 mix, extra contact tips, .035/.045" (0.9/1.2 mm) reversible drive rolls and material thickness gauge.

566463

567115 - Includes EZ-Latch™ single cylinder running gear, chain to secure gas cylinder.

567116 - Includes EZ-Latch™ dual cylinder running gear with elevated gun and cable rack, Multimatic 235/255 TIG kit, two chains to secure gas cylinders.

XMT 350® CC/CV Multiprocess Welder



Miller

Portability and excellent arc performance make the XMT family the most popular in the industry. The XMT 350 CC/CV is the most popular model for its flexibility and simplicity. Auto-Line™ Power Management technology allows for any input voltage hookup (208-575 VAC, single- or three phase) with no manual linking. Adaptive Hot Start™ makes starting stick electrodes easy without creating an inclusion. Standard 14-pin receptacle has the flexibility to be used with spool guns, feeders and remote controls.

Input Power Auto-Line™, 208–575V, requires 3- or 1-phase power. Output Range 10–38V, 15-425 A. Weight 80 lbs.

566397 - Dinse Welder

567141 - 20 Series Welder with MIG Runner Package **Includes** Bernard BTB 300 Gun, 6' 2/0 wire feeder, 10' 2/0 work cable with clamp, .035-.045 reversible dual V drive rolls, regulator/flowmeter and 3' gas hose.

M I D W E S T
BLOG

CHOOSING A
WELDING
MACHINE

READ NOW

Click STK number for more information and PRICE

Dynasty® 210 Welder



Miller

Combines inverter technology and advanced features. Weighing only 47 pounds, it can weld up to 1/4" thick material and offers the most flexible AC/DC TIG/Stick power supply. Ensure proper machine setup and parameter selection with informative on-screen explanations and dynamic images. Program memory allows easy naming, saving, and recalling of common weld settings. Locks and limits provide control of the weld parameter ranges, minimizing deviations from the welding procedure specifications.

Processes Stick (SMAW), TIG (GTAW), TIG AC (GTAW-AC), TIG DC (GTAW-DC). Material Thickness Aluminum 0.012" (0.3 mm)-1/4" (6.4 mm), Steel 0.020" (0.5 mm)-1/4" (6.4 mm). Overall size 21.88"L x 8.5"W x 13.88"H.

Includes 8' primary cord, Adjustable Shoulder Strap and two 50 mm. Dinse-style Connectors.

566396 - Welder **566398** - Welder, TIGRunner

Dynasty 300 Welder



Miller

A powerful combination of capability and portability, it can weld up to 3/8" thick material. The AC/DC TIG/Stick power sources feature an energy-efficient inverter design and Auto-Line™ technology. Program memory allows easy naming, saving, and recalling of common weld settings. Tailored arc control (DIG) allows the arc characteristics to be changed for specific applications and electrodes. Pro-Set feature eliminates the guesswork when setting weld parameters.

Processes Air Carbon Arc Cutting (CAC-A), Stick (SMAW), TIG (GTAW), TIG AC (GTAW-AC), TIG DC (GTAW-DC). Material Thickness Aluminum 0.012"-3/8", Steel 0.004"-3/8". Input voltage 208V, 220/230/240V, 380/400V, 460/480V, 575/600V. Input 1- and 3-Phase.

Machine Only Includes primary cord, shoulder strap and Dinse-style connectors. **567039**

TIGRunner & Foot Control Includes Coolmate 1.3, TIGRunner, small runner cart, torch kit and accessories, coolant, wireless foot control and primary cord. **567147**

TIGRunner Package Includes Coolmate 1.3, small runner cart, shoulder strap and primary cord. **567040**

Dynasty 400 Welder



Miller

A powerful, compact power source capable of welding up to 5/8" aluminum. Total arc control provides maximum productivity and weld quality while conserving energy compared to traditional welding machines. Independent amplitude/amperage control allows EP and EN amperages to be set independently to precisely control heat input to the work and electrode. Advance Squarewave provides a fast freezing puddle, deep penetration, and fast travel speeds. High-speed DC TIG pulse controls capable of 5,000 pulses per second.

Processes Air Carbon Arc Cutting (CAC-A), Pulsed TIG (GTAW-P), Stick (SMAW), TIG AC (GTAW-AC), TIG DC (GTAW-DC), TIG (GTAW). Material Thickness Aluminum 0.015" - 5/8", Steel 0.012" - 5/8". Input 1- and 3-Phase

Welder Includes 8" primary cord and two 50 mm Dinse style connectors. **567042**

Welder & TIGRunner Includes 8' primary cord, two 50 mm Dinse style connectors and TIGRunner. **567043**

Welder, TIGRunner & Foot Control Includes Coolmate 3.5, torch kit and accessories, coolant, TIGRunner and wireless foot control system. **567049**

Renegade 208-460V ES 300i Welder



ESAB

Highest power to weight ratio in its class weighing in at 33 lbs. and producing 300A at 40% duty cycle (Stick). Combined with its rugged case, Renegade is ideal for the most extreme environments. Handles single- and three-phase power from 208V to 460V automatically, and puts out 5 to 300 amps. Excellent performance on 6010 (cellulosic) electrodes and additional functionally to tailor arc force for a softer or crisper arc. TIG operational range from 5A to 300A.

Processes MIG, Stick, TIG. Input 208 to 460V, 50/60 Hz, 1-3 phase. Unit size 18.1"L x 7.9"W x 12.6"H. Weight 33 lbs.

Includes Renegade ES 300i power supply, shoulder strap, 10' input cable and two OKC 50 connectors. **405766**

Rebel EMP 215CI Welder



ESAB

A complete MIG/MAG/DC TIG/Stick package ready to weld mild steel, aluminum, and stainless steel. Featuring DC Pulse TIG functionality for reduced heat input and refined weld profile. Perfect for welding on thin metals and heat sensitive applications. SmartMIG (sMIG) technology features basic mode for beginners, all the way up to dynamic arc control for more experienced students.

Processes: Multi-Process, SMAW/MMA (Stick), GTAW-DC (TIG DC), GTAW (TIG), GMAW (MIG/MAG), FCAW (Flux Core). Weld Thickness: 3/8". Input: 120 VAC \pm 10% %, 1, 50/60 Hz 230 V \pm 10 % , 1, 50/60 Hz. Unit size 23"L x 9"W x 16"H. Weight 45.3 lbs.

Includes Tweco Fusion™ 180 GMAW gun with 10' cable, tips, allen Key, torch with accessories, Victor® Flow Meter with 10' gas hose, electrode holder and lead assembly, work clamp and lead assembly, OK AristoRod 12.50 0.030", 2 feed rolls, thickness gauge, power adapter, safety manual, USB stick including manuals, weld parameter chart and quick start guide.

405764

Rebel EMP 235IC Welder



ESAB

Excellent performance on MIG, TIG and Stick. Detach unit from cart for ultimate mobility. Run the full range of .035" wire – short arc and spray transfer. Also up to .045" solid wire and up to .052" cored wire, rods up to 5/32", and TIG rods up to 3/16".

Processes: MIG (GMAW), Flux-cored (FCAW), DC stick (SMAW), Pulsed TIG (GTAW-P). Input Power 240V, 1 Ph. 250 A/30 V MIG (GMAW/FCAW) Welding Output @ 104°F: 120 A/19 V (120 V) @ 40% Duty Cycle, 235 A/26 V (230 V) @ 40% Duty Cycle. STICK (SMAW) Welding Output @ 104°F: 90 A/23.6 V (120 V) @ 40% Duty Cycle, 210 A/28.4 V (230 V) @ 25% Duty Cycle. TIG (GTAW) Welding Output @ 104°F: 130 A/15.2 V (120 V) @ 40% Duty Cycle, 240 A/19.6 V (230 V) @ 40% Duty Cycle. Current Range: 5 – 150 A (120 V), 5 – 250 A (230 V).

Includes power supply, MIG gun, regulator, 12.5' hose, return clamp with leads, drive rolls, contact tips, wire, electrode holder, electrodes, power adapter and manual.

405763

Rebel 120-240V EMP 285CI Welder



ESAB

Designed for excellent performance on MIG, Flux-Cored, TIG, and Stick applications. Capable of welding up to 300A, this multi-process, multi-voltage industrial welding machine runs the full range of 0.035" and 0.045" wires. The innovative "smart-MIG" feature dynamically monitors the arc characteristics, ultimately adapting to your technique, resulting in a smooth, stable arc. With the 4 Roll Drive System, weld up to .052" solid wire and up to 1/16" cored wire. Plus, electrodes up to 5/32" and TIG rods up to 3/16".

Processes MIG, Stick, TIG. Input 120-240, 50/60 Hz, 1-phase. Unit size 26.5"L x 11.5"W x 19.5"H. Weight 70 lbs.

Includes MIG gun, electrode holder, 7018 electrodes, argon flowmeter regulator, 12.5' hose, return clamp with leads, drive rolls, contact tips and .035" wire.

405765

REBEL
EMP 235

**SHOP ALL
ESAB PRODUCTS**

Click STK number for more information and PRICE

STICK WELDERS

Maxstar® 161 STL TIG/Stick Welder



Miller

Compact design with convenient handle/shoulder strap provides maximum portability. Separate 120 and 240 volt power cords disconnect from the rear panel of the machine without using any tools. Using inverter-based power source provides superior arc starts and excellent weld puddle control, even with E6010 electrodes. Adaptive Hot Start™ technology easily handles difficult-to-strike electrodes. Machine can detect if the electrode is stuck to the part and turns the welding output off to safely and easily remove the electrode.

Max open circuit voltage 48 VDC. Input Voltage: 110/115/120V, 220/230/240V. Size 5.6"W x 13.5"D x 10.3"H. Weight 13 lbs.

566464 - Stick Package **Includes** welder, 6.5' primary cords for 120V and 240V, 13' stick electrode holder with 25 mm. Dinse-style connector, 10' work clamp with 25 mm. Dinse-style connector, adjustable handle/shoulder strap and quick reference guide.

566465 - Stick Package with X-Case **Includes** welder, 6.5' primary cords for 120V and 240V, 13' stick electrode holder with 25 mm. Dinse-style connector, 10' work clamp with 25 mm. Dinse-style connector, adjustable handle/shoulder strap and quick reference guide, AK2C accessory kit and X-Case.

Thunderbolt® DC Stick Welder



Miller

Powerful, lightweight portable welder allows you to work smarter not harder by bringing the welder to the work. It provides up to 85 more amps compared to leading competitive machines, which means you can weld thicker materials. Hot Start™ technology provides easy, quick and reliable arc start. Precise, accurate, infinite amperage control and heat output. Mfr.'s 3-year True Blue warranty.

210 DC Rated output: 210A @ 20% duty cycle. Amperage range: 25-210 A (240V).

Unit size 7.125"W x 10.5"H x 13.375"L. Weight 15.5 lbs.

Includes 10' #4 electrode cable with heavy-duty electrode holder, 10' work cable with clamp, 6.5' power cord for 240V and cable pouch.

566386

AC-225 Stick Welder 230V AC



LINCOLN

Compact stick welder produces an extremely smooth AC arc for welding carbon, low alloy and stainless steels, and cast iron. Easy-to-set amperage selector sets the current quickly and accurately, ensuring a consistent and uniform arc. Smooth arc makes it easy to weld with different electrodes, including mild steel, low hydrogen, stainless steel and hard-facing electrodes. NEMA rated, UL listed and ULCSA approved.

Rated output: @ 20% duty cycle: 225 amps @ 25V. Output range: 40-225. Unit size 17.25"W x 12"D x 24"H. Weight 96 lbs.

503590 - **Includes** insulated electrode holder and cable, heavy-duty work clamp and cable, input cable with attached plug.

AC/DC-225/125, Constant Current Arc Welder



LINCOLN

Smooth, stable, and compact stick welder for carbon, low alloy and stainless steels, and cast iron. Easy-to-set amperage selector sets current quickly and accurately, ensuring consistent and uniform arc. Smooth arc makes it easy to weld with different electrodes, including mild steel, low hydrogen, stainless steel and hard-facing electrodes. Rugged design handles the toughest applications.

Rated Output: @ 20% duty cycle: AC 225 amps @ 25V, DC 125 amps @ 25V. Output range: AC 40-225 (AC), 30-125 (DC).

Unit size 24"H x 17-1/4"W x 12"D. Weight 114 lbs.

503600 - **Includes** insulated electrode holder and cable, heavy-duty work clamp and cable, input cable with attached plug.

Arc Welder Wheel Kit



LINCOLN

For Arc Welder Models K1170 and K1297.

Includes axle, 2 wheels and assembly hardware. **503500**

Weld-Pak® 180iMP Multi Process Welder



LINCOLN

Lightweight, portable welder connects to 120 or 230 volt power. An excellent choice for MIG, Flux-Cored, Stick and DC TIG welding up to 1/2" thick materials. Intuitive user interface, easy setup, and plenty of accessories. Mfr.'s 3-year warranty.

Processes: MIG, Flux-Cored, Stick, DC TIG. Output Range: 30-180A MIG, 10-165A DC TIG, 25-160A Stick. Unit Size: 13.6" x 8.9" x 18.1". Weight: 34.5 lbs.

Includes 300 Amp ground clamp, 6' six-gauge work cable with DINSE connector, wire spool adapter, 230V to 120V adapter, shielding gas regulator and 6' hose, 200 Amp stick electrode holder, MAGNUM® 100L MIG gun, contact tips and nozzles quick start guide and process chart.

503710

Renegade VOLT ES 200i Cordless Welder



ESAB

Portable, cordless, battery powered, Stick and TIG welder with the versatility to operate on battery, AC mains, or in hybrid/AMP+ mode. Runs on 6 Ah, 9 Ah, and 12 Ah DeWALT® FLEXVOLT® batteries to provide the power to burn up to 33 (E6013) electrodes on a single charge. Special features include hot start, arc force, memory storage, and cellulosic mode to optimize performance based on application or user preference. Rugged industrial design with durable, impact-resistant housing and multiple lift points for easy operation and transport. Processes Stick, TIG. Input 120-220, 1-phase. Overall size 19"L x 9"W x 19"H. Weight 95 lbs.

Includes power source, 4 batteries, 4-port fast charger, electrode holder, 10' cable, 10' return cable, shoulder strap, detachable battery box and power adapter.

405772

CST™ 282 Stick/TIG Welder



MILLER

Designed for welding pipe and plate in the construction industry. This compact, 35 lb. welder goes anywhere, delivering 280 amps of superior Stick and TIG performance with Auto-Line™ Technology to utilize nearly any source of primary power on the jobsite.

Processes: Stick (SMAW), TIG (GTAW) Lift-Arc™. Input Power 208–575V, 3- or 1-phase power. Amperage Range Stick: 30–280 A, TIG: 5–280 A Max. Open-Circuit Voltage 103VDC. Weight 34.6 lbs.

Includes 6' power cable. **566383** - Tweco **566384** - Dinse

Syncrowave® 300 Stick/TIG Welder



MILLER

For fabricators who need more TIG welding productivity and lower operating costs. Welder delivers more stable arcs and better arc-starting characteristics, making it easy for any welder to get more work done and do better work. Save up to 33% on energy costs versus outdated welding equipment. Intuitive user interface is simple to understand making it easy to adjust parameters.

Processes: TIG (GTAW), Stick (SMAW), DC pulsed TIG (GTAW-P). Input Power 208/240/480, 3-ph or 1-ph power. Amperage Range: 5–300 A. Max. Open-Circuit Voltage: 60 VDC. Rated Output 300 A at 22V, 30% duty cycle, 210 A at 18V, 60% duty cycle. Weight: 101 lbs. (machine only).

Input power cord not included, sold separately.

566380 - Machine Only **Includes** Syncrowave® 300

566381 - TIG Runner Package **Includes** Syncrowave® 300, Running Gear, Coolmate™ 3S

567050 - Wired Foot Control Complete Package **Includes** Syncrowave® 300, Coolmate™ 3S, Running Gear, Weldcraft™ W-280 torch kit and accessories, Coolant (4 one-gallon bottles) and RFCS-14HD foot control.

567146 - Wireless Foot Control Complete Package **Includes** Syncrowave® 300, Running Gear, Weldcraft™ W-280 torch kit and accessories, Coolant (4 one-gallon bottles), wireless foot control system, Coolmate™ 3S.

TIG WELDERS

Invertec® V155-S TIG Welder



LINCOLN

The Invertec® V155-S packs the full punch of a heavyweight professional at just under 15 lbs. The 120/230V auto reconnect operation can operate from a portable generator and plug into a 200' 230V extension cord. SOFT and CRISP stick modes provide the right arc characteristics for different types of electrodes. Fan-As-Needed™ (F.A.N.™) reduces noise and dust inside the machine. Touch Start TIG® mode.

Rated output: @ 100% duty cycle (DC), 120V circuit: (Stick) 75 amps @ 23V, (TIG) 105 amps @ 14.2V, 230V circuit: (Stick) 105 amps @ 14.2V, (TIG) 130 amps @ 15.2V. Rated input 22.8 and 28.8 amps. Output range: (DC) 5-155 amps. Unit size 6.2"W x 15.4"D x 11.3"H. Weight 14.7 lbs.

Includes stick electrode holder, cable and Twist Mate™ plug, work cable and clamp with Twist Mate™ plug, fully adjustable shoulder strap, 6.6' cord and extra plug.

503678

Syncrowave 210 TIG MIG Spoolmate 150 Package



MILLER

The easy-to-use 210 TIG/MIG provides legacy arc performance that allows you to expand your capabilities with an all-in-one package. Low power draw inverter provides full welding output from 240V while drawing less than 30 amps. Fan-on-Demand™ allows fan to run up to 36% less to reduce the amount of contaminants pulled through the machine. Miller's True Blue 3-year warranty.

Steel 0.020"-1/4", Aluminum 0.020"-1/4". Amperage Range: 5-210. Rated output: @60% 120 A @ 15V. Unit size 18.5"W x 31.5"H x 43"L. Weight 144.5 lbs.

Includes welder, 10' primary cord, 12' Dinse connector, 12' work cable with clamp and Dinse connector, 12' stick electrode holder with Dinse connector, HD remote foot control, regulator/flow gauge and gas hose, 4-pin to 14-pin connector, spool gun and quick reference guide.

567135

Diversion™ 180 TIG Welder



MILLER

Portable, easy-to-use AC/DC TIG machine designed specifically for aluminum and stainless steel welding in a variety of applications. Fan-On-Demand™ power source cooling system only operates when needed. High-frequency arc starting provides non-contact arc initiation that reduces tungsten and material contamination. Auto-postflow adjusts the length of postflow time based on the amperage setting, shielding your tungsten and eliminating the need to set the postflow time. Mfr.'s 3-yr. warranty.

Rated Output: 150 Amps @ 16VDC, 20% duty cycle. Weight: 50 lbs.

Includes power source, 8' primary cord with 2 MVP plugs, 12.5' Weldcraft® WP-17 TIG torch with backcap, ceramic gas cup, 3/32" collet and collet body, 2% ceriated tungsten, RFCS-RJ45 remote foot control, 12' work cable with clamp and regulator/flow gauge with hose.

567031

MIG WELDERS

Power MIG® 256 Welder



LINCOLN

For light industrial job shop fabrication, maintenance or repair work. Diamond Core Technology™ delivers excellent out-of-position arc stability, low spatter and a wide voltage sweet spot for steel, stainless steel, aluminum. Maxtrac® cast aluminum industrial wire drive features dual driven rolls, regulated wire feed speed control, brass-to-brass connections and 100% wire supporting split wire guide system. Digital meters display preset voltage and wire feed speed. Magnum® Pro gun and cable (15') makes it easy to reach work. Copper Plus™ contact tips improve heat dissipation increasing tip life. 115V auxiliary receptacle to power a grinder or other equipment. Coil Claw™ cable management system keeps workstation organized.

Rated output: @ 40% duty cycle: 250 amps @ 26V. Output range: (DC) 30-300. Wire speed range 50-700 ipm. Unit size 31.8"H x 18.9"W x 38.8"D. Weight 245 lbs.

Includes Magnum® Pro 250L gun (and 15' quick-connect cable with fixed gas nozzle assembly), expendables tray, built-in undercarriage with easy-load gas cylinder platform, work clamp and 10' cable, drive roll and wire guide to feed .035"/.045" wire, gas regulator and hose kit for argon blend gases (for use with CO2 shielding gas, order a Lincoln Electric S19298 CO2 shielding gas bottle adapter) and large color coded procedure sheet.

503700

MIG Handler® 140 Welder



HOBART

Unit is ready to weld with or without shielding gas (no add'l. kit required). 25-140 amp output range easily handles a broad selection of solid mild steel or stainless, flux cored and aluminum wires. Welds 24 ga. up to 1/4" steel. 5-position tapped voltage control selector allows fine tuning for a smooth, stable arc on all thicknesses. Industrial cast aluminum wire drive system. Dual-groove quick change drive roll. Convenient polarity changeover

Rated output: @ 20% duty cycle: 90 amps @ 18VDC, 63 amps @ 21VDC. Output range: (DC) 25-140. Wire speed range 40-700 ipm. Unit size 12-3/8"H x 10-5/8"W x 19-1/2"D. Weight 57 lbs.

Includes 10' H100S2-10 MIG welding gun, built-in gas valve, regulator and gas hose, power cord with plug, 10' work cable with clamp, sample spool of .030" self-shielded flux cored welding wire, 8" wire spool adapter and extra .030" contact tips.

563230

Running Gear/Cylinder Rack



MILLER

Heavy-duty construction with 8" rubber rear wheels and ball bearing casters. Convenient front handles, cable hangers, lower shelf for storage and plastic consumable box. For gas cylinders no greater than 7" in diameter or 65 lbs. in weight. For use with Millermatic and Diversion Welders.

Size 37"L x 18"W x 36-1/4"H. Weight 35 lbs.

566327

Miller[®] 142 MIG Welder



MILLER

Auto-Set™ automatically sets your welder to the proper parameters. Simply set the wire diameter and material thickness, and start welding! Segmented display is easy to read. Quick Select™ Drive Roll makes setup quicker by offering 3 grooves: 2 for different size solid wire and 1 for flux-cored wire. Smooth-Start™ technology provides a smooth, spatter-free start. Thermal overload shuts down the unit and activates the over-temperature light if the airflow is blocked or duty cycle is exceeded. Tip Saver shuts down output when the tip is shorted to the work, extending tip life and protecting internal components from damage.

Rated Output 100 A at 19 V, 60% duty cycle 80 A at 18 V, 100% duty cycle. Wire Speed 60 - 600 ipm. Unit size 9.75"W x 20"D x 14.625"H. Weight 33 lbs.

Includes 10' MDX™-100 MIG Gun, 10' work cable with clamp, 6'5" power cord with plug, argon and AR/CO2 mix flow gauge regulator with gas hose, Hobart® spool of .030" solid wire, 2 contact tips for .030" wire, quick select drive rolls for .024" or .030"/.035" solid wire and .030/.035" flux-cored wire, material thickness gauge and hook-and-loop cord wraps.

566470 - Welder Only

567058 - Welder with Running Gear

Miller[®] 208/240/460/575V 355 MIG Welder



MILLER

Easy to use machine has 7" color LCD screen featuring Auto-Set™ Elite pre-defined weld settings, program mode to save and recall common settings, and Trigger Program Select to choose programs via gun trigger. This all-in-one welder does MIG, pulsed MIG, and flux-cored welding. It connects to any single- or 3-phase North American input power and welds up to 1/2" aluminum, stainless, and mild steel.

Rated Output 310 A at 29.5 V, 60% duty cycle. Input Voltage 208V, 220/230/240V, 460V, 575V. Input 1- and 3-Phase.

Welder - Includes power source with 9' industrial power cord, 10' work cable with clamp and 50 mm Dinse-style connector, flow gauge regulator and gas hose, reversible drive rolls, extra contact tips, material thickness gauge.

566382

Welder & Running Gear - Includes power source with industrial power cord, MIG gun with consumables, work cable with clamp and 50 mm Dinse-style connector, flow gauge regulator and gas hose, reversible drive rolls, contact tips, material thickness gauge, EZ-Latch™ Running Gear and chain.

567148

Miller[®] 211 MIG Welder



MILLER

Welds material from 24-gauge to 3/8" thick in a single pass. Advanced Auto-Set™ includes five different wire/gas combinations and .024, .030 and .035" wires. Auto Spool Gun Detect™ automatically detects when a MIG gun or spool gun is connected. Miller's True Blue 3-year warranty.

Weldable metals Steel, Stainless Steel, Aluminum.

Rated output @ 40% duty cycle 150 amps @ 21 VDC. Amperage range 30 A - 230 A. Wire speed range 60-600 ipm.

Unit size 11.25"W x 12.5"H x 20.5"L. Weight 38 lbs.

Includes 6.5' power cord, adapter plugs (120, 240V), 10' MIG gun and cable assembly, 10' work cable and clamp, Argon and AR/CO2 mix regulator/flow gauge with hose, .030" solid wire spool, 2 contact tips for .030" wire, drive roll for .024" or .030/.035" solid wire, and .030/.035" flux cored wire, material thickness gauge and cord wraps.

566457 - Welder Only

567129 - Welder with Running Gear/Cylinder Cart

Millermatic® 252 MIG Welder



MILLER

Welds material from 22 ga. to 1/2" T in 1 pass. Very high output for welding longer on high-end applications. Large, digital front panel w/built-in digital timers menu for presetting voltage and wire feed speed (standard run-in, pre/postflow, burnback, spot/delay "stitch" timer menu). Auto Gun Detect™ allows operator to pull trigger on MIG gun, spool gun, or push/pull gun (automatically detects and recalls voltage, wire feed speed and timer of the active gun). Push-Pull gun direct connection. Angled, dual-gear driven cast aluminum drive system (with no-tool, quick-change reversible drive rolls and easy-to-set, scaled tension knob). EZ-Change™ Low Cylinder Rack allows operator to easily roll cylinders on and off of rack without lifting cylinders. EZ-Access™ Consumable Compartment and Parameter Chart to easily and correctly set weld parameters. Active Arc Stabilizer™ for less weld cleanup. Line voltage compensation keeps power constant. Larger work area with longer 15' M-25 gun. Fan-On Demand™. Mfr.'s warranty: 3-yr. (parts/labor), 5-yr. (main power rectifier parts).

Rated output: @ 40% duty cycle: 250 amps @ 28VDC. @ 60% duty cycle: 200 amps @ 28VDC. Wire feed speed (IPM) 50 - 700 ipm. Unit size 30"H x 19"W x 40"D. Weight 194 lbs.

Includes 10' power cord, 15' 250-amp MDX™-250 MIG gun with Bernard® AccuLock™ MDX consumables for .030/.035" wire, 10' work cable and clamp, argon mix regulator/flow gauge and hose, extra contact tips, running gear with EZ-Change™ single low cylinder rack and .030/.035" reversible drive rolls.

567010 - 200/230 Volts

567011 - 230/460/575 Volts

567063 - 200/230 Volts - Spoolgun Aluminum Package

567064 - 230/460/575 Volts - Spoolgun Aluminum Package

5/8" Flush Gun Nozzle

MILLER

For use with M-25 and M-40 MIG guns

566271

Spoolmatic™ 30A Spool Gun



MILLER

Wire speed adjustment on the handle and reversible drive rolls save time and money. Quick-change, single-turn contact tip provides excellent performance and is easy to replace. Integrated spool canister rotates 180° for operator flexibility and comfort. 2-stage trigger with built-in gas valve allows for gas preflow and eliminates the need to purge long gas lines. Miller True Blue warranty.

200 amp @ 100% duty cycle. Wire speed: 70-875 ipm. Spool size: 4". Wire dia. capacity: .030-1/16" aluminum wire, hard wire .030 - .045".

Includes 30' 10-pin cable assembly.

565968

Millermatic® 255 MIG Welder



MILLER

Capabilities include MIG, pulsed MIG and flux-cored welding. Built for professionals who want a smaller, versatile welder with intuitive setup to increase efficiencies and productivity. Auto-Line™ allows for any single-phase input voltage hookup (208–240V) with no manual linking. Easy-to-understand interface with 7" color LCD display ensures proper setup. Auto-Set™ Elite offers predefined weld settings for operators of all skill levels.

Processes: MIG (GMAW), Pulsed MIG (GMAW-P), Flux-cored (FCAW). Input: Auto-Line™ 208–240V, 1-phase. Rated Output: 230 A at 25.5V, 60% duty cycle. Amperage Range: 20–350 A. Wire speed range 50-800 ipm. Unit size 13.75"W x 26.25"D x 19.24"H. Weight 84 lbs.

Includes power source with 10' industrial power cord, 15' MDX™-250 MIG gun, consumables for .035"/.045" wire, 10' work cable with clamp and 50 mm Dinse-style connector, flow gauge regulator and gas hose for argon or AR/CO2 mix .035"/.045" reversible drive rolls, contact tips and material thickness gauge.

567035 - 208/240 Volts

567137 - 208/240 Volts - with Running Gear

Rogue EM 190 Pro MIG Welder



ESAB

An inverter-based MIG/MAG welding system designed for light fabrication, repair, and maintenance. The system features industrial-grade arc performance and full featured controls that allow you to fine tune arc characteristics based on the material you're welding.

MIG/MAG Welding Output: 145 A / 21.25 V at 30%, 102 A / 19.1 V at 60%, 79 A / 17.95 V at 100%. Wire speed range 75-650 ipm. Unit size 23.2"L x 8.7"W x 15.2"H. Weight 37.3 lbs.

190A MIG/MAG power source, torch, regulator/flow gauge, return cable kit, gas hose, AristoRod, feed rolls 0.023/0.030" V (fitted), 0.030/0.035" V and 0.030/0.035" VK, Contact Tips 0.023, 0.030, 0.035" and manuals.

405770

Rogue 120/230V EM 210 Pro Welder



ESAB

An inverter-based MIG welding system designed for everything from light fabrication to repair and maintenance. Features industrial-grade arc performance and full featured controls to fine tune arc characteristics based on material. Intuitive 5" TFT screen offers clear views with direct interaction. Full range of welding parameters, 0.020–0.30" with single knob control. Configure the display to 1 of 29 languages Unique rugged industrial design supports multiple lift points and cable management.

Input Voltage 230 VAC ±10%, 50/60 Hz 120 V ±10%, 50/60 Hz. Output range (DC) 63-210. Wire speed range 75-650 ipm. Unit size 23.2"L x 8.7"W x 15.2"H. Weight 37.3 lbs.

405773

Contact Tips

MILLER

Replacement tip for sold or flux-cored welding wires. For use with all M-Series MIG guns.

565750 - Size .023" / Quantity 10

565748 - Size .030" / Quantity 10

565749 - Size .035" / Quantity 10

Contact Tip Adapter

MILLER

Helps prevent galling, sticking and thread stripping. For use with M-10, M15, M100, M150 welding guns. Brass.

566273

1/2" Flush Gun Nozzle

MILLER

For use with M-10, M15, M100 and M150 MIG guns.

566270



HOW TO CREATE
A **SAFE** WELDING
ENVIRONMENT

READ NOW

WIRE FEEDERS

20 Series Wire Feeder Q4015



MILLER

Trigger hold control allows operator to make long extended welds without having to hold gun trigger. Four gear-driven drive rolls offer smooth, positive, and accurate wire feed with long, uninterrupted service life. On-board burnback and motor ramp control offers unmatched starting and stopping performance on a variety of power sources to ensure positive arc starting performance. Robust 16-gauge sheet metal housing is less prone to damage.

Wire feed speed range 75 to 750 ipm. Electrode wire dia. capacity 0.035", 0.078". Unit size 12.375"W x 27.875"D x 16"H. Weight 46 lbs.

Includes BTB 400A Gun, .035/.045" dual-V drive rolls, AccuLock contact tips three .035, two .045.

567131 - Basic

567132 - Digital

PLASMA CUTTER

AirForce® 27i Plasma Cutter



HOBART

Plasma cutter with MVP™ (multi-voltage plug) technology can be used on 120V or 240V input power. Designed for increased comfort with an ergonomic trigger safety, more efficient cooling and economical replacement cutting tips. Clean cuts 3/8" steel. Wind Tunnel Technology™ prevents abrasive dust and particles from damaging internal components. Complete cutting capability when powered by an engine-driven welder/generator with 240V receptacle of 4 kW or more.

Rated Output 120V (15 A): 20 A @ 88 VDC, 60% duty cycle. 120V (20 A): 27 A @ 92 VDC, 35% duty cycle. 240V: 30 A @ 92 VDC, 40% duty cycle. Size: 5.5"W x 9"H x 13.25"L Weight: 19 lbs.

Includes torch, 12' work cable with clamp, 10' power cord with plugs, filter and regulator, 2 tips, shield deflector, electrode and cable management.

563238

Electrodes **566278**

MILLER

Replacement 25/27A Electrodes. 5/pkg.

Non-Shielded Tips **566279**

MILLER

Replacement 25/27A Tips. 5/pkg.

Shield Cup **566296**

MILLER

Replacement Shield Cup. 5/pkg.

Cutmaster 40 Plasma Cutter



ESAB

Offering the highest power-to-weight ratio and cutting arc length in its class, this unit has a 40% duty cycle depending on application, automatic voltage input detection from 110-240 V, and will automatically set the max output: 27 amps for 110 and 40 amps for 200-240 V.

Rated Duty Cycle: 40% @ 40 A, 60% @ 30 A, 100% @ 20 A. Input 110 – 240 VAC +/- 10%, 50/60 Hz, 1ph. Overall size 18.1"L x 7.9"W x 12.6"H. Weight 22 lbs.

Includes power supply, torch with lead, work lead with ground clamp, spare parts kit, input power adapters, 1/4" NPT air fitting with quick connect and operating manual.

405768

Spectrum® 375 X-TREME™ Plasma Cutter



MILLER

Auto-Line circuitry automatically connects to 120 – 240 V, single-phase power, 50/60 Hz without removing the covers to relink the power source. Auto-Refire™ automatically controls the pilot arc when cutting expanded metal or multiple pieces of metal. Complete cutting capability when powered by an engine-driven welder/generator. XT30 torch with an ergonomic handle. LED indicators for power, pressure, cup and temperature. LVC™ provides peak performance power under variable conditions.

Rated output: (DC): 20 amps @ 35% duty cycle. Rated input: @ rated output: 20 amps @ 120V. 30 amps @ 240V. Plasma gas flow/pressure 5.0 scfm @ 90 psi. Cut cap'y. 3/8" steel, 1/4" alum. Unit size 9"H x 5-1/2"W x 13-1/4"D. Weight 19 lbs. with torch.

Includes torch with 12' cable, heavy-duty work clamp with 12' flexible cable, 10' power cord, MVP plugs, 2 electrodes, 2 tips, deflector, air fitting, X-CASE and shoulder strap.

566435

Spectrum 625X Plasma Cutter



MILLER

Big cutting power in a small package. 40 Amps for 5/8" mild steel cutting. Auto-Line circuitry automatically connects to 120–240 VAC without making internal changes. MVP adapters allow connection to 120 or 240V receptacles without tools. Auto postflow calculates optimum length of postflow time. Line voltage compensation provides peak performance for steady and cleaner ending cuts. Auto-Refire technology controls pilot arc when cutting expanded metal or multiple pieces. Automatic air regulation compensates for input pressure variation. LED indicators for power, pressure, cup and temperature. Heavy-duty work clamp w/flexible cable and quick connect. X-CASE provides ultimate protection.

Rated Output: 40 amps @ 140 VDC, 50% duty cycle. 27 amps @ 91 VDC, 20% duty cycle. Required Input Pressure/Flow 6 SCFM (170 L/min.) @ 90 PSI minimum, 120 PSI. Unit size 5.5"W x 13.25"D x 9"H. Weight 21 lbs.

Includes torch with cable, complete set of consumables, heavy-duty work clamp and flexible cable with quick connect, 12' power cord, MVP™ adapters and plugs, shoulder strap, consumables box with 2 electrodes, 3 tips, drag shield, deflector and air fitting and molded case.

566445 - Cutter with 12' Cable

566446 - Cutter with 20' Cable

Cutmaster® A-Series Automated Plasma Cutting System



THERMAL DYNAMICS

The A-Series includes the SL100® SV 1Torch® with standard 25' (7.6 m) ATC Quick Disconnect. The 1Torch start technology eliminates the electronic interference that can occur with other designs. 1Torch provides quick, reliable starts and a strong pilot arc to pierce heavy plate. With auto-pilot restart, it can also cut expanded metal quickly and easily. With all the advantages of 1Torch and proven reliability, the automated A-Series delivers the best in productivity, precision and performance. A powerful 80% Duty Cycle to handle all-day production cutting in the toughest environments. CNC Interface connection is located on the rear of the power supply offering "Start/Stop", "OK to MOVE" and divided arc voltage. Software automatically detects the torch that is attached and switches between automation and manual modes. Dedicated automation software improves cycle time and performance in many applications.

Output Range: 30-80 Amps @ 80% DC, 100 Amps Max., Adjustable

Includes power supply, automation torch with 1-3/8" dia. (35 mm) non-metallic mounting tube/32 pitch rack (detachable), pinch block assembly, CNC interface cable, spare parts kit, input power cable, work cable and clamp.

405801

Easy Weld 20A Plasma Cutter



Forney

Ideal for sheet metal to thin plate cutting, this machine is able to clean cut mild steel, stainless steel, aluminum, galvanized steel, brass, and copper up to 1/4", and aluminum up to 3/16". This unit features Drag Torch Technology, allowing you to drag the tip directly on the surface of the material for smooth and precise cuts. Operate this machine with a 120V power source and 1.5 CFM of compressed air.

Duty Cycle 35% @ 20 AMP. Input 120-volt. Output 20 AMP. Size 15.125" x 8.125" x 11.57". Weight 21.5 lbs.

Includes cutting torch, ground clamp, adapter, extra electrode and extra nozzle.

409870

115V 25i HandyPlasma Cutter



ESAB

Hand-held, light and portable power source for plasma cutting with a 115 V 50/60 Hz single phase power supply. Simple and easy to use interface with a 2-4/5" color TFT screen and a large control knob to manage all adjustments. Machine automatically detects the inlet and outlet pressure eliminating the need to constantly adjust gas. An automatic system purges gas after cutting, increasing the useful life of the consumables.

Output Power 3 kW. Duty Cycle 25A @ 25% duty cycle. Gas Pressure 5.5-7.6 bar (80-110 psi). Cut Capacity 5/16" Mild Steel, 1/4" Stainless Steel, 3/16" Aluminum. Size 16.34" x 6.93" x 12.76". Weight 29.7 lbs.

Includes 10' work lead with clamp, shoulder strap, compressed air connector and air filter wrench.

405802

Cutmaster 60i Plasma Cutter



ESAB

The perfect combination of end-user insight, advanced technology, and intelligent design. Packed with power and offering the highest power-to-weight ratio in its class, it also has best-in-class cutting arc length and the most empowering and engaging user experience in any application. Cutmaster MechPak is also available for easy integration into semi-automatic cutting processes.

Input Voltage: 208 – 480 VAC +/- 10%, 50/60 Hz, 1 ph or 3 ph. Rated Duty Cycle: 50% @ 60 A, 60% @ 50 A, 100% @ 40 A
Overall Size 21.12"L x 7.85"W x 14.15"H. Weight 37 lbs.

Includes torch with cable.

405769

Flex 30 Plasma ST



Forney

This all-in-one welding and cutting machine is portable, easy to use, generator-friendly, and features innovative inverter technology. Powerful, dual-voltage plasma cutter and stick/TIG welder works with 120V and 240V power. Cleanly cut from thin sheet metal to 3/8" plate (sever cut up to 5/8"). Constructed with an all-metal case. Digital display provides greater accuracy and control.

Output Power (Welding) 120V @ 85A, 240V @ 160A (DC output only). Output Power (Cutting) 120V @ 20A, 240V @ 30A. Size 16.68" x 8.25" x 11.94". Weight 19.65 lbs.

Includes consumables, power cable, stick electrode holder, ground cable and clamp and removable plasma torch with Euro Connect 120V-240V adapter cord.

409872

OXY-ACETYLENE WELDING KITS



Journeyman Edge 2.0 Cutting Outfit

Victory

Extra-heavy-duty welding and cutting outfit. Includes Edge 2.0 oxygen and acetylene regulators, plus H315FC+ torch handle with built-in flash back arrestors and CA2460 cutting attachment. Cuts up to 3/4". Welds 3/64"-1/2" with included nozzles.

Includes edge regulators, torch handle, cutting attachment, cutting tip, tip cleaner, heating nozzle, striker, goggles, hose and welding nozzles.

405608



Self-Lighting Torch Kit

ESAB

A complete tote propane/MAPPRO® outfit that also stores your cylinders and other tools. The included self-igniting PL-3T and PL-4T tips can solder up to 2" copper tubing and braze up to 1" copper using acetylene gas. Self-lighting torch trigger has a 3-year warranty and is good for up to 100,000 lights.

Includes tote case, PL-3T and PL-4T self-lighting tip, STK-R regulator, H4 torch handle, 12' TS-12 hose, hose clamp and heat shield.
Gas cylinder not included.

405620

Medium-Duty Combination Torch Outfit

Miller

Complete oxy-fuel system can handle high gas flow for faster cutting, heating, brazing, and welding. The medium-duty cutting attachment can cut up to 6" thick steel with appropriate tip. MC12 series medium-duty slip-in cutting tips are designed for general medium-duty hand cutting. Use with medium pressure acetylene and oxygen to cut 1/4"-5/8" thick metal. MC40 series 2-piece medium-duty preheat cutting tips are designed for hand cutting with propane and propane-based fuel gases.

Includes torch handle, cutting attachment, oxygen regulator, acetylene regulator, 2 Cutting Tips, welding tip, heating tip, twin hose, friction lighter, safety glasses, tip cleaner and torch mount flashback arrestors.

567155





Medium Duty Acetylene Kit

MILLER

Includes torch handle, cutting attachment, oxygen regulator, acetylene regulator, cutting tip, welding tip, heating tip, 20' 3/16" twin hose, friction lighter, safety glasses, regulator mount, check valves and manual.

567152



Shop Flame II Torch Kit

FORNEY

Medium-duty oxygen/acetylene unit. Precision engineered and designed for trouble-free performance. Features built-in reverse flow check valves.

Includes oxygen regulator, acetylene regulator, welding torch handle, cutting attachment, universal mixer, #1 cutting tip, #1 welding tip, check valves, striker, hose (3/16" x 20') and goggles.

409900

Toughcut OXY-LP Medium Duty Cutting Propane Outfit



MILLER

The Toughcut series is perfect for a multitude of applications such as farm, ranch, hobby, automotive, refrigeration, light fabrication and repair. Features rugged, reliable Series 30™ medium-duty regulators and accessories.

Includes torch handle, cutting attachment, oxygen regulator, LPG regulator, cutting tip, 20' x 1/4" twin hose, friction lighter, regulator mount check valves and safety glasses.

567151

250-Series Deluxe Oxy-Acetylene Medium-Duty Kit

FORNEY

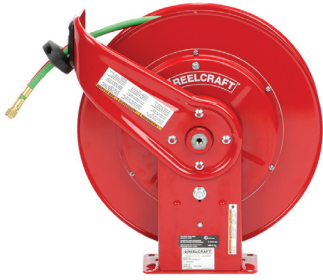
Cuts up to 150mm and welds up to 9mm. Has built-in check valves. Ideal for medium-duty fusion welding, braze welding, brazing, heating, hand cutting applications, HVAC, and auto repair.

Includes oxygen regulator, acetylene regulator, 100-Series torch handle, 1350-Series cutting attachment, #0-3-101 cutting tip, #W-1-0 welding tip, #W-1-2 welding tip, #W-1-4 welding tip, 6-MFA-1 heating nozzle, 1/4" x 15' t-grade hose, check valves, shade #5 goggles, flint spark lighter and 13-piece tip cleaner.

409902



Spring Retractable Gas Welding Hose Reel



REELCRAFT

TW Series spring retractable gas welding hose reel has an independent dual swivel body manufactured from aluminum and hard coated for wear resistance. This unique design assures positive separation of gases. The double sealed, special molded O-rings prevent leakage. The swivel inlets are both permanently identified with machined grooves on the gas side to assure proper installation.

Hose I.D. 1/4", O.D. .530". Pressure 200 psi. Hose end 9/16"-18 (F). Inlet 1/4" NPT (F). Reel outlet 9/16"-18 (M). Max temp 150°F. Weight 50 lbs.

688451

Welder's Box



CRESCENT

Compact, portable design with staked and welded hinges, welded corner gussets, and textured powder paint finish. Features cut-out for supply hose, 10-gauge latching hasp, and wide lifting handles.

487774

ELECTRODE OVENS

Welding Electrode Oven w/ Thermometer



KEEN

Features a long-lasting Incoloy-sheathed tubular heating element located beneath a protective cover. Comes with an external dial-adjustable thermostat and thermometer accessory installed in the door. Hexagonal shelving produces better natural convection within the oven so heat reaches the electrode coating more effectively to stave off atmospheric moisture. Made of solid steel construction for durability. The exterior is powder-coated in KEEN blue and features a rugged door handle, tack-welded door hinges, heavy-duty storage shelves, and 1" thermal insulating wool for energy efficiency.

K-200 Capacity 200 lbs., 18"L. Temp. range 150° - 300°F. Insulation 1" thermal wool. Interior 19"D x 13"W x 13"H. Weight 53 lbs.

492015 - 120 Volts

492016 - 240 Volts

K-450 Capacity 450 lbs., 18"L. Temp. range 150° - 550°F. Insulation 2" thermal wool. Interior 19.5"Dia. x 20"D. Weight 95 lbs.

492025 - 240 Volts

492026 - 120 Volts



KT-15 Portable Welding Electrode Oven

KEEN

Lightweight and portable, oven protects electrodes when transferring from holding oven to job. Square shape makes them more stable and indicator light lets you know when they're on. Can operate at 120V or 240V with only cord cap modification. Meets electrical code requirements when used with grounding plug and receptacle. Always be sure to use approved components for proper voltage and amperage.

Interior Dimensions 3.3" x 19". Electrode Capacity 15 lbs., 18" rods. Weight 13 lbs.

492005

WELDING SUPPLIES

E6011 Arc Welding Electrodes

FIREPOWER

Premium E-6011 all position electrode. Use when unable to prepare welding surface. Deep penetration allows welds through rust, scale, oil, and dirt. Mild steel type with 60,000 PSI tensile strength. AC or DC, reverse polarity.

405656 - 1/8" Rod

405662 - 3/32" Rod

E7014 Arc Welding Electrodes

FIREPOWER

Premium E-7014 all position electrode. Best used with clean or prepared welding surface with medium to low penetration. Designed for high deposition and high electrode travel speed. Iron powder type with 70,000 PSI tensile strength. AC or DC, reverse polarity.

405700 - 1/8" Rod

E6011 Stick Welding Electrodes

ESAB

An all-position, cellulosic type electrode designed for AC. Produces an easily controlled forceful arc with deep penetration and a high quality weld metal which will pass specification requirements for radiography. Used primarily for welding mild steels such as ASTM A-36, A-283, A-284, A-285, A-515, A516, and ABS hull and boiler steel.

405600 - 3/32" Rod

405601 - 1/8" Rod

E7014 Stick Welding Electrodes

ESAB

An iron powder-coated electrode for using higher welding currents while improving the deposition rate. High speeds and high heats can be used without undercut. Slag removal is excellent. Widely used for welding mild steels.

405607 - 1/8" Rod

405606 - 3/32" Rod

E6013 Arc Welding Electrodes

FIREPOWER

Premium E-6013 all position electrode. Best used with clean or prepared welding surface. Excellent for low heat applications designed for general purpose. Mild steel type with 60,000 PSI tensile strength. AC or DC, reverse polarity.

405676 - 1/8" Rod

405682 - 3/32" Rod

E7018 Arc Welding Electrodes

FIREPOWER

Premium AWS Class E-7018 all position electrode. Use with clean or prepared welding surface. Medium penetration allows for X-ray quality welds. Low hydrogen type. AC or DC, reverse polarity. 70,000 PSI tensile strength.

405695 - 3/32" Rod

E6013 Stick Welding Electrodes

ESAB

An all-position electrode. Stable arc even when using low-voltage open circuit transformers. Arc power allows depositing quick welds, medium penetration, and good appearance. Minimizes the risk of trapping the slag due to its mineral coating. Use when ease of operation and good appearance is required. Recommended for welding vehicle bodies, profiles, tanks, ducts chassis, freight cars, ornamental jobs, and thin-sheet structures.

405603 - 1/8" Rod

405602 - 3/32" Rod

E7018 Stick Welding Electrodes

ESAB

A general purpose, easy-to-use, basic DC+ electrode with good mechanical properties for welding of mild and low alloy steels.

405605 - 1/8" Rod

405604 - 3/32" Rod

Sureweld E6010 Stick Welding Electrodes

ESAB

An all-position, quick solidifying, cellulosic type electrode with minimal spatter and excellent arc control. Deep penetration and easy removal of slag for single and multiple pass welds of X-ray quality. Adapts exceptionally well to vertical and overhead projects on all mild steels. Used for holding tanks, freight cars, and truck chassis.

405599 - 1/8" Rod

405598 - 3/32" Rod

Low-Fuming Bronze Brazing Rod



FORNEY

High-quality low-fuming bronze brazing rod with flux is formulated for high tensile strength and ductility. Smooth flowing and excellent for most brazing uses. Flux coated for best cleaning action. Yellow color coded.

409912

ER70S-6 Copper Coated Brazing Rod



FORNEY

General purpose, high quality, mild steel welding rod for repair of low carbon steels. Copper coated rod has .06% max carbon and .17% max manganese. Red color coded.

409907 - 3/32" x 36", 5 lbs.

409908 - 1/8" x 36", 5 lbs.

MIG Welding Wire Spool

BEST WELDS

Provides high-quality porosity-free, X-ray-quality welds when used on dirty, oily, or rusty steel. Creates a smooth bead appearance resulting in minimal post-weld grinding.

ER70S-6 Carbon Steel MIG Welding Wire For high quality welds when used on dirty, oily, or rusty steel.

618731 - Wire Size .30" - Spool Size 2 lbs.

618732 - Wire Size .30" - Spool Size 11 lbs.

618733 - Wire Size .30" - Spool Size 33 lbs.

618734 - Wire Size .35" - Spool Size 2 lbs.

618730 - Wire Size .35" - Spool Size 11 lbs.

618735 - Wire Size .35" - Spool Size 33 lbs.

ER5356 Aluminum MIG Welding Wire For general purposes. Offers relatively high shear strength and salt water corrosion resistance.

618736 - Wire Size .30" - Spool Size 1 lb.

618737 - Wire Size .35" - Spool Size 1 lb.



Gas Welding Rods



FIREPOWER

For gas welding. High strength mild steel with copper coating.

409907

Oxy-Acetylene Rod Assortment



FORNEY

For gas welding. 14/pkg. 18" length, 1 lb. Includes seven 3/32" rods and seven 1/16" rods.

942806

Holder & Soapstone

FORNEY

532807 - Holder

532808 - Soapstone, 6-pack



All-purpose Brazing Flux

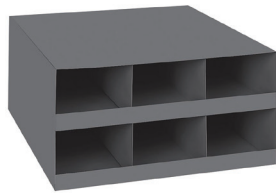


FORNEY

For use with oxy-acetylene or arc torch, in the general brazing of steel, malleable iron, cast iron and galvanized metals. Also use when fusion welding copper, brass, bronze and other copper alloys. Cleanses the metal and readily dissolves any oxides that may be present or formed during brazing. Oxides form a low melting point, fusible slag, permitting the filler metal to flow freely and form a non-porous, oxide-free weld.

942870

Welding Rod Rack



DURHAM

All steel construction with 6 compartments (ea. 5-1/4"W x 18-3/8"D x 4"H). Holds welding rod up to 18" long. Ships assembled. Durable gray powder coat finish.

345100

Deluxe Welding Rod Storage Tube

FORNEY

Made of high-impact polypropylene plastic, this storage tube has 4 internal compartments to organize up to 10 lbs. of rods.

The screw-type cap and rubber O-ring provide clean, dry, air-tight storage for electrodes.

410000



50-Person Unitized First Aid Kit



FIRST AID ONLY

With enough materials to serve 50 people, this first aid kit has a carrying handle and can be wall mounted. Includes CPR face shield, scissors, first aid tape, first aid guide, hand sanitizer packets, adhesive fabric bandages, fingertip bandages, knuckle fabric bandages, antibiotic ointment packets, infection control wipes, antiseptic towelettes, first aid/burn cream packets, burn dressing, hydrocortisone anti-itch packets, sting relief wipes, cold pack, nitrile exam gloves, sterile gauze pads, triangular bandage, eyewash, trauma pad and conforming gauze rolls.

189148

Fire/First Aid Blanket



STEINER

Durable gray wool blanket can be used to smother flames and cover injured victims. Blanket stores in a bright red Fyr-Glo™, weather-resistant nylon pouch. Heavy duty carrying handle is attached to tote pouch.

Meets 16 CFR Part 1610 standard for flame retardant use.

884885

Fire Blanket with Cabinet



SELLSTROM

White fiberglass, heat-resistant blanket to cover the fire, or to wrap around a person whose clothes are on fire. Protects for excursion temperatures to 1000°F. Chemical resistant red steel cabinet is wall-mountable (15"H x 15"W x 2"D) and designed to protect blanket from common exposure.

772740

WELDING TOOLS

Maghold 4-Piece V-Pad Kit



Strong Hand Tools

Includes 2 small V-Pads and 2 medium V-Pads.

886062

Magnetic Retrieving Tool



Strong Hand Tools

886030

MIG Pliers



Strong Hand Tools

886065

Weld Cleaning Tools

FORNEY

For fast, clean slag removal. Hammer heads are high carbon steel with flat chisel. Wide blade prolongs tool life.

Chipping Hammer with Brush

409950

969323 - Brush refill

Straight Head Chipping Hammer

409960

409965 - Chipping Hammer Wooden Handle



Dominator Weld Wakker™

MAYHEW

Break apart spot welds or bonded panels. Strikeable handle end cap and side edge of tool. 1" blade with black oxide finish. Soft-grip handle.



528640

Tip Cleaner Kit



BEST WELDS

Light and easy to use. Fits all tip sizes. Includes file and 13 sizes (6-26).

942804

Flat File Flint Lighter



SHURLITE

Constructed using a round cup design. Allows user to replace the flint when necessary.

795098

Universal Round File Flint Lighter

SHURLITE



Features large square hood for trapping flammable gases for easy ignition. Wire frame is made from a specialty steel which retains its springiness over the life of the lighter.

795100

Universal Single Flint Renewals



SHURLITE

Flint Renewals for Stk.

795100 and 795098. 5/pkg.

795102

Tri-flint Lighter



SHURLITE

Made of heavy-duty steel band with 3 flints attached. Triangular design provides 3x the use before renewing flints. USA made.

795110

795115 - 4 Pack

Electrode Holder



FORNEY

Heavy-duty 300 Amp electrode holder for most arc welding jobs. Accommodates rods up to 3/16" diameter. Will accept up to #2 welding cable. 10-1/2" length.

942895

Steel Ground Clamp



FORNEY

Good positive connection clamp with 1-3/4" wide jaw opening. 300 Amps, #2 cable capacity, 8" length.

942896

Welding Positioner



GREENE

42" high, for out of position welding. Use with arc and gas welding. All welded construction. Black color.

433615 - For Grouted Tables 433624 - For Grate-Top Tables



Weld Tester

GREENE

Loads and deforms weld samples in a controlled manner with 8,000 psi applied pressure. Heavy steel construction with a plexiglass safety deflection guard. 1" bending rollers and 1" solid steel bending pin create a 2-1/4" bending radius. Color Safety Green.

Test samples up to 5/8" T x 2" W x 10" L. 6" stroke distance. Overall size 6"W x 8"D x 12-1/2"H.

433797

Roller-Guided Bend Tester

FISCHER

Readily adjustable for all standard radii and up to 3/8" or 1/2" thick specimens. Comes with a 1-1/2" diameter mandrel. Uses hardened, tool steel rollers to support the specimen during bending. The rollers rotate on heavy-duty needle bearings so there is no drag placed on the specimen. The bent specimens bottom eject into a foam cushion.

Electric Roller-Guided Bend Tester Bender size 17"W x 6"D x 22"H. Pump size 7"W x 14"D x 7"H. Weight 78 lbs. **Includes** electric cylinder, pump, mandrel and mandrel adapter.

405902

Pneumatic Roller-Guided Bend Tester Bender size 17"W x 6"D x 22"H. Pump size 5"W x 15"D x 6"H. Weight 67 lbs. **Includes** hydraulic cylinder, pump, mandrel and mandrel adapter.

405901



Pneumatic Weld Bend Tester

FISCHER

Portable weld bend tester is intended for applications where the material and thickness to be bent are usually the same. While this model is not adjustable for different radii, it can be converted by interchanging additional parts. Integral hydraulic system, single bend radius for economy. Convertible from 1/4" up to 1-3/4" bend radii.

Size 11"W x 6"D x 20"H (Bender), 5.6"W x 14.7"D x 5.7"H (Pump). Weight 42 lbs.

Includes 1.5" outside dia. mandrel and adapter.

405900

Fillet Weld Tester

FISCHER

25-ton, hydraulic H-frame press will perform qualification and process control testing of typical fillet-welded "T" joints made from 1/2" maximum thickness hot rolled low-carbon steel. The specimens to be tested must have dimensions in accordance with one of the following codes or standards: AWS D1.1, ASME Section IX, or AWS B2.1.

Specimen capacity 1/2" T max., 4-6" L. Compression force 50,000 lbs. max. Ram travel 6" max. Air pressure 90-120 psi @ 9 cfm for pneumatic operation. Size 37"W x 28"D x 72"H. Weight 500 lbs.

Includes 6" stroke cylinder with spring return, air and hand powered hydraulic pump, pressure gauge and flip-up safety shield to protect the operator (not shown).

405904



Cylinder Truck



HARPER

Continuous handle model safely transports a 7-1/2" oxygen and 9-1/4" acetylene cylinder combination. Semi-pneumatic rubber tires with smooth operating ball bearings.

Bracket chain 24"H. Base plate 9" x 18". Overall size 22-3/4"W x 39-1/2"H.

618710 - 10" dia. tires

618711 - 12" dia. tires

Magnetic Holding Clamp

FORNEY

Multi-purpose magnet holds sheets and tubes at 45°, 90° and 135° angles freeing up welder's hands. 1" thick.

409980 - 4-3/16"H x 7-1/2"W

409981 - 3-1/4"H x 4-3/4"W



Mini Magnetic Support Jigs



PERFORMANCE TOOL

Heavy duty magnets hold up to 9 lbs. of material each at 45°, 90° and 135° angles for maximum versatility.

976585

The Original™ Locking Sheet Metal Tool



WISE-GRIP

Locks on with a powerful grip. The tool makes all kinds of bending, forming and crimping jobs easier and faster. Nickel-plated, heat-treated alloy steel clamp has micro-adjustment screw mechanism

619201

Locking Sheet Metal Clamp



CRESCENT

Rust resistant, nickel-plated finish. Maximum jaw opening meets ASME standards. Precisely machined ferrule for fine jaw adjustment. Compound action for powerful non-slip locking grip.

310636

Locking Panel Clamp



WISE-GRIP

Designed to move in a straight-line motion to allow more access to work area for quick clamping and alignment of auto body panels. Ideally suited for automotive and welding applications.

619495

Adjust-O™ 90° Magnet Square Dual Switch



Strong Hand Tools

Machined flat and V-surfaces are ideal for round and square tubing, angle, and flat stock. Two on/off switches for independent operation. Turn magnets off when setting up, then turn on when ready to work.

886060

Adjust-O™ Magnetic Square



Strong Hand Tools

886050 - size 4.4" x 3.8" x 1"

886051 - size 6" x 5.1" x 1.3"

886052 - size 4.4" x 3.8" x 1.1"

Multi-Angle Magnetic Square



Bessey

High-quality ferrite magnets hold work at pre-set angles of 45°, 90°, and 135°, or can be linked together to form any angle you need.

236970

Light Duty F-Clamp



Strong Hand Tools

886160 - Capacity - 4-1/2"

886161 - Capacity - 6-1/2"

886162 - Capacity - 8-1/2"

The Original™ Locking C-Clamp



VISE-GRIP

Powerful locking mechanism. Jaws open wide. Guarded release helps keep work fast and safe. Adjusting screw gives exacting pressure. Locks work with the squeeze of 1 hand. Tough high-grade, heat-treated alloy steel.

Length Max. Opening

Regular Tips

619070	6"	2-1/8"
619402	11"	3-3/8"
619455	18"	8"
619492	18"	7-1/2"

Swivel Pads

618996	4"	1-5/8"
619075	6"	2-1/8"
619408	11"	4"
619460	18"	8"

The Original™ Locking Welding Clamp



VISE-GRIP

U-shaped for visibility and working space. Holds work in proper alignment.

619268

Locking C-Clamp



CRESCENT

Jaw opening meets ASME standards. Precisely machined ferrule for fine jaw adjustment. Powerful, non-slip compound locking grip allows easy positioning of workpiece.

Length Max. Opening Throat

Regular Tips

310632	6"	3.4"	2.25"
310634	11"	5.6"	4.05"

Swivel Pads

310633	6"	3.4"	2.25"
310635	11"	5.6"	4.05"

Welding Clamp with Regular Tips

310637	9"	2.75"	2.90"
--------	----	-------	-------

Welder's Pliers



CHANNELLOCK

Grips and draws out wire. Spring-loaded groove nose design for superior spatter removal. Precision machined, laser heat treated cutting edge. Easy installation and removal of tips, bushings and nozzles.

301452

MIG Welding Pliers



VISE-GRIP

Perfect for welding service applications, including spatter removal, wire cutting, drawing wire and removing or installing nozzles or contact tips. Wire cutter has a durable induction-hardened cutting edge. Small hammer is built into the tool, for light maintenance of welding guns. Pliers are spring-loaded, simple to use and have dipped grips for added comfort.

619310

PROTECTIVE EYEWEAR

Welding Handshield



SELLSTROM

Designed for comfort and safety when used in either hand. Cover cap included for the unused hand hold opening to protect from sparks and infrared radiation. Offers quick filter plate replacement. Includes 2" x 4-1/4", shade 10 and clear cover plates. **Meets ANSI Z87.1-2003 standard.**

772536

X35™ Series



SELLSTROM

Uniquely designed flip-up lens glasses for soldering, brazing and cutting operations. Features adjustable temples. Anti-scratch UV absorbing polycarbonate lens provides outstanding impact strength and optical clarity for rugged industrial protection. **Meets ANSI Z87.1+ standards.**

772741 - 3 Lenses

772742 - 5 Lenses

B5™



SELLSTROM

High-impact, adjustable frame. Clear anti-scratch UV-absorbing polycarbonate lens provide optical clarity for industrial work. For indoor/outdoor work in low light. Shade 5 IR for welding, medium to heavy torch soldering, brazing and cutting operations.

Meets ANSI Z87.1 and Can/CSA Z94.3 standards. CE certified. Provides 99.9% UV protection.

772498 - Clear

772499 - Shade 5 IR

Shade 5 Protective Eyewear



MILLER

Shade 5 IR lenses offer protection for cutting, brazing or soldering applications. Soft foam protection keeps dust and perspiration from the eyes. Wrap-around design with flexible temples, anti-fog coating, shatterproof polycarbonate lenses and rubber ear pads.

Meets ANSI Z87.1+ standard.

566244

Odyssey® II Shade 5 Cutting Goggle



SELLSTROM

Ultra comfortable, soft black goggle body with soft flange on top/bottom for a secure, snug seal. Indirect vents on top/bottom protecting against liquids and dust while permitting indirect ventilation. Easy-adjust cloth flame-retardant strap. Extra-wide peripheral vision. Fits over prescription eyewear.

Meets ANSI Z87.1-2003 standard.

772729

Plate Welding Goggle



JACKSON SAFETY

These goggles provide a comfortable yet snug seal to keep eyes safe while welding and cutting. Top and bottom indirect vents provide superior ventilation and fog-free working environment.

Includes shade 5 filter plate in heat-resistant nylon retainer.

772506

Gas Welding Goggle



FORNEY

Lift-front welding goggles have a 2" x 4-1/4" hardened lens with #5 shade and clear glass cover lens. Fits comfortably on the head and allows room for eyeglasses. Provides 99.9% UV protection.

Meets ANSI Z87.1 safety standards. Designed for gas welding only.

409928

Bionic® Fog-Free Full Face Shield



UVEX

Extremely lightweight and highly adjustable for all-day comfort, this face shield provides enhanced protection with excellent optics for safety and visibility in any environment.

Meets ANSI Z87.1+ and CSA Z94.3 standards. Face shield offers secondary protection and must be worn with spectacles or goggles.

475121

DP4 Face Shield with Flip-up IR Window



SELLSTROM

Face shield features a spring mounted flip-up/flip-down IR window (4.375" x 9.25" x .070") for uninterrupted face protection during cutting and grinding operations. Molded polycarbonate anti-fog window (9" x 12.125" x 0.060") meets high impact standards and is chemical resistant. Ratcheting headgear for comfort and convenience.

Meets ANSI Z87.1 and CSA Z94.3 standards.

772643

380 Series Premium Dual Crown Face Shield with Chin Guard



SELLSTROM

"Crown and chin" combination offers an exclusive extra-wide side window, as well as oversized crown and chin guards. Curved shield provides protection from splash, chemical splash, particles and flying debris. Acetate windows are chemical and scratch resistant. Windows attach using exclusive Sellstrom patterned pin mount design. Adjustable ratchet headgear suspension for a custom fit at the turn of the knob.

Meets ANSI Z87.1 and CSA Z94.3 standards.

772595

380 Series Replacement Window



SELLSTROM

Premium acetate window is chemical and scratch resistant. Fits 380 Series Single Crown Headgear with Chin Guard.

Meets ANSI Z87.1 and CSA Z94.3 standards.

772593

301 Series Advantage™ Single Crown Ratcheting Headgear with Face Shield



SELLSTROM

Durable aluminum-bound clear polycarbonate face shield with universal mount windows. Comfortable, ratchet headgear with ABS crown.

Meets ANSI Z87.1 and CSA Z94.3 standards.

772730

Universal Faceshield Replacement Window



SELLSTROM

Acetate window is chemical and scratch resistant, eliminating additional hard coat treatments. Universal hole mounting patterns are designed to fit on Sellstrom's 301 Series crowns as well as many other common brands.

Meets ANSI Z87.1+ and CSA Z94.3 standards.

772731 - Clear, Aluminum-Bound

772495 - IR Shade 5

390 Series Premium Single Crown Pin-Lock Headgear



SELLSTROM

Extra-large high impact crown provides excellent above-the-head coverage. Window (sold separately) attaches using exclusive Sellstrom patterned pin mount design.

772644

390 Series Premium Single Crown Pin-Lock Headgear with Face Shield



SELLSTROM

Extra-large high impact crown provides excellent above-the-head coverage. Curved shield provides protection from splash, chemical splash, particles and flying debris. Acetate windows are chemical and scratch resistant. Windows attach using exclusive Sellstrom patterned pin mount design.

Meets ANSI Z87.1 and CSA Z94.3 standards.

772641

390 Series Premium Single Crown Ratcheting Headgear



SELLSTROM

Extra-large high impact crown provides excellent above-the-head coverage. Window (sold separately) attaches using exclusive Sellstrom patterned pin mount design. Adjustable ratchet headgear suspension for a custom fit at the turn of the knob.

772596

390 Series Premium Single Crown Ratcheting Headgear with Face Shield



SELLSTROM

Extra-large high impact crown provides excellent above-the-head coverage. Curved shield provides protection from splash, chemical splash, particles and flying debris. Acetate windows are chemical and scratch resistant. Windows attach using exclusive Sellstrom patterned pin mount design. Adjustable ratchet headgear suspension for a custom fit at the turn of the knob.

Meets ANSI Z87.1 and CSA Z94.3 standards.

772575 - Sta-Clear™ Anti-Fog

772576 - Shade 5 IR

772598 - Clear

390 Series Replacement Window



SELLSTROM

Premium acetate window is chemical and scratch resistant. Windows attach using exclusive Sellstrom patterned pin mount design. Fits 390 Series Single Crown Headgear.

Meets ANSI Z87.1 and CSA Z94.3 standards.

772590 - Clear

772591 - Sta-Clear Anti-Fog

772592 - Dark Green

772594 - Shade 5 IR



4 Welding Safety Supplies Your Students Need

READ NOW

29. [Click STK number for more information and PRICE](#)

WELDING HELMETS

T94™ Series ClearLight™ 4x Welding Helmet



MILLER

Clearlight 4x lens technology provides high-definition optics for a clearer, brighter, and more realistic view. A brighter 2.5 light state allows users to keep the hood down, improving safety and productivity. The auto on/off, quick-release, one-piece cover lens simplifies lens changes, reducing downtime, plus HDV technology provides a sharp detailed view at any angle with minimal distortion. An aluminum heat shield protects the lens in high-amp applications. Half-shade settings for precise adjustments plus shade 5 side windows to enhance peripheral vision and amplify user's sense of their surroundings.

Includes helmet bag, 2 inside cover lenses and 5 outside cover lenses.

Meets ANSI Z87.1+ and CSA standards.

566342 - external grind control

566343 - integrated grind shield

Hellfire Premium Welding Helmet



JACKSON SAFETY

Lightweight and ergonomically designed, this welding helmet ensures all-day comfort by reducing stress and fatigue. Comes with Jackson Safety's 370 Speed Dial premium ratcheting headgear for quick and easy adjustments. The ideal choice for welding, grinding, cutting, and carbon arc gouging. CE certified and meets ANSI Z87.1 and CAN/CSA Z94.3 Standards.

Includes batteries.

Meets ANSI Z89.1 and CAN/CSA Z94.3 standards. CE certified.

772435

Advantage Series Auto-Darkening Welding Helmet



SELLSTROM

Solar-powered helmet with excellent neck and head protection. Lightweight design ideal for extended use. Designed for use with a cartridge respirator. Features 2 independent arc sensors and 3-position sensitivity and delay controls. Easy auto-darkening filter and cover plate changes. Comfortable push and twist adjustment allows custom fit.

Meets ANSI Z87.1 and CSA certified to CAN/CSA Z94.3 standards.

772786

Advantage Plus Auto-Darkening Welding Helmet



SELLSTROM

Solar and battery-operated helmet with excellent neck and head protection. Lightweight design for extended use. Wide viewing area ideal for difficult work areas. Designed for use with cartridge respirator. Features 4 arc sensors and adjustable sensitivity and delay controls. Easy auto-darkening filter and cover plate changes. All controls are internal for maximum protection. Low battery warning and grind mode/grinding warning.

Meets ANSI Z87.1 and CSA certified to CAN/CSA Z94.

772787

Premium Series Auto-Darkening Welding Helmet



SELLSTROM

Features state of the art Blue Lens technology for true color vision and better welds. Full digital shade, sensitivity, delay, and weld/grind control. Memory function saves custom settings. Lightweight design ideal for extended use with excellent neck and head protection. Designed for use with a cartridge respirator. Features 4 arc sensors. Easy auto-darkening filter and cover plate changes. All controls are internal for maximum protection. Low battery and grind mode/grinding warning. Solar and battery operated.

Meets ANSI Z87.1 and CSA certified to CAN/CSA Z94.3 standards.

772788

Easy Weld ADF Welding Helmet

FORNEY

Features easy-to-use controls, so you don't have to worry about learning complicated instructions before you start welding. Lightweight, impact resistant, fireproof shell for increased comfort and protection. Solar cells with non-replaceable 3V lithium batteries (CR2032) and automatic on/off technology.

Meets ANSI Z87.1-2003 standard, and exceeds all related CE standards (DIN and ISO).

409927



Savage A40 Welding Helmet

ESAB

Helmet has a high-tech lightweight shell to protect from heat, sparks, and spatter. Uses the latest ADF technology to give a high clarity view with True Color for excellent optical quality. Provides ideal functionality, performance, and comfort. Includes full helmet assembly, 2 replacement outer lenses, replacement inner lens, CR2450 battery and safety manual.

Meets standards CE EN379 and EN175, ANSI, CSA, AS/NZS.

405610 - Black

405611 - Yellow



Digital Performance™ ClearLight™ 4x Welding Helmet

MILLER

Lightweight helmet features superior headgear for increased efficiency, welding shades 8-13, cutting shades 5-8, half shade settings, quick release cover lens, 3 arc sensors, auto on/off, 2.5 light state, 3 operating modes, digital controls, and AutoSense™ helmet sensitivity. ClearLight™ 4x lens technology delivers clearer, brighter, more realistic view.

Includes helmet bag, 2 inside cover lenses and 5 outside cover lenses.

Meets ANSI Z87.1+ and CSA standards.

566332



ClearLight 4x Welding Helmet

MILLER

ClearLight™ 4x lens technology delivers clearer, brighter, more realistic view. Lightweight helmet features superior headgear for increased efficiency, welding shades 8-13, cutting shades 5-8, half shade settings and quick release cover lens.

Meets ANSI Z87.1 and CSA Z94.3 standards.

Digital Elite 566339 - 566341 **Digital Infinity** 566335- 566338

Digital Performance 566333 & 566334



290 Super Slim Style Series



SELLSTROM

Lightweight, silver-coated nylon helmet. Sheds spatter without burning. Features Sel-Snap™ retention system and uses standard size filter, cover, impact and magnifier plates. Drop down ratchet headgear.

Requires lens, sold separately. Meets ANSI Z87.1-2003 standard. Caution: glasses or goggles must be worn whenever using welding helmets. Impact-resistant plates are not unbreakable and do not provide extraordinary protection against flying particles, splash, spray and spatter.

STYLE	VIEW AREA
772580 - Lift Front	2" x 4-1/4"
772582 - Fixed Front	2" x 4-1/4"
772606 - Fixed Front	4-1/2" x 5-1/4"

Headgear Ratchet



SELLSTROM

Drop down ratchet headgear for all Sellstrom welding helmets.

772568

Classic Series Welding Helmet



MILLER

Trusted entry level helmet for the value-minded welder. Features ClearLight™ lens technology, 3 operating modes, 2 independent arc sensors, variable welding and cutting shades, auto-on/off lens, adjustable lens sensitivity and Gen 1 headgear. Includes 5 outside cover lenses and 2 inside cover lenses.

Meets ANSI Z87.1+ and CSA standards.

566309 - Black

566312 - Rise™

MP-10™ Series Welding Helmet



MILLER

The welding helmet for the value-minded welder. Features a passive shade #10 lens, industry standard size filter plate and inside cover lens. Convenient magnifying lens holder. Black. Weight 18 oz.

Meets ANSI Z87.1+ and CSA standards.

566242



Midwest Welding Helmet Kit

MIDWEST

Ideal choice for Stick, TIG, Pulsed TIG, MIG, Pulsed MIG, Flux-cored and gouging. Lightweight auto-darkening welding helmet in an eye-catching grunge graphic pattern. Super fast 1/25,000 switch time, with adjustable sensitivity control. Comfortable headband and absorbent sweatband. Solar powered. 2 arc sensors. External shade control.

Variable welding shades DIN 9 to 13. TIG rating 5 amps. Operating temp. 14°F - 131°F. Includes helmet, pair welding gloves, magnet, soapstone holder, 6 soapstones, wire welding brush and chipping hammer.

ANSI approved, meets CSE/CE standard EN379.

558240

Welder Starter Kit



FORNEY

Basic kit includes several accessories for beginner students.

Includes helmet, welding gloves, chipping hammer and scratch brush.

408890

Krazy Kap Cotton Welding Cap



STEINER

Soft, breathable, absorbent and flame-retardant cotton. Protects head/hair under helmet or hard hat. Soft visor protects forehead or back of neck. Wide band elastic on sides with 3" x 8" soft visor. Reversible and machine washable.

884995 - Small - Large

884996 - Medium - X-Large

CF™ Carbonized Fiber Beanie



STEINER

Carbonized fiber beanie is woven with para-aramid strengthening fibers to make the material flame resistant and tough, yet lightweight, breathable, and comfortable. Elastic gathered back offers a secure fit.

884998

Shade 10 Auto Darkening Filter



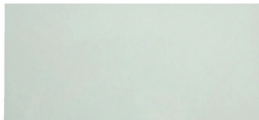
JACKSON SAFETY

Solar powered ADF is a universal fit for most 2" x 4.25" welding helmets.

Meets or exceeds ANSI Z87.1 and CAN/CSA Z94.3 standards. CE certified.

772430

CR-39 Long Life Clear Cover Plate



SELLSTROM

Cover plate provides protection from pitting and scratching. Made of durable, heat resistant material containing CR-39 Monomer. Superior resistance to scratches, heat and chemicals.

Meets ANSI Z87.1 Standards and High Impact Standards

772504 - 2" x 4-1/4"

772512 - 4-1/2" x 5-1/4"

Shade 10 Welding Lens



JACKSON SAFETY

Fits Forney and other brand helmets. Provides UV/IR protection.

Meets ANSI Z87.1 Safety Standards.

409929 - 2" x 4-1/4"

409930 - 4-1/2" x 5-1/4"

Student Welding Safety Pack



Miller

All-in-one safety pack ensures students are prepared with comfortable and fitted PPE.

Includes classic cloth jacket, MIG lined gloves, TIG/multi-task gloves, classic clear safety glasses, black long handled stainless wire brush, frame safety glasses #5 slag, chipping hammer with wire brush, MIG welding multi-function pliers and tool bag.

566190 - Small

566191 - Medium

566192 - Large

566193 - X-Large

566194 - 2X-Large

Shade 10 Passive Filter

Jackson Safety

772405



RESPIRATORS

Half-mask Respirator



3M

Economical, lightweight respirators can be disassembled, cleaned and reused. Features soft thermoplastic elastomer facepiece, good visibility and easy-adjust head straps. Use to protect students from a variety of gases, vapors and particulate hazards (including petrochemical, chemical manufacturing, construction, transportation and electronics). When properly fitted, helps provide respiratory protection from certain organic vapors at concentrations up to 10x the Permissible Exposure Limit (PEL).

Meets NIOSH standard. 2 filters required for each mask, sold separately.

942682 - Medium

942683 - Large

Organic Vapor Cartridges



3M

NIOSH approved for environments containing certain organic vapors. Use with 3M™ half and full Facepieces 6000, 7000 and FF400 Series with bayonet filter holders. 2 filters required for each mask.

590265

P100 Particulate Filter 2091



3M

Made with electrostatic media to enhance the capture of airborne particles and reduce breathing resistance. Compatible with 3M™ Series 6000, 6500/6500QL, 7500, FF-400, 7800 and Scott™ AV-3000 SureSeal facepieces with bayonet adapter.

NIOSH approved.

590258

sel-kleen™ Pre-Moistened Equipment Cleaning Packets



SELLSTROM

Anti-static, anti-fog cleaning solution impregnated in tissues. Contains no silica; scratch free. Alcohol-free pads feature the active ingredient benzalkonium chloride and will not harm even the most sensitive rubber facepieces. Convenient and easy to use single packets measure 5" x 8". Self-dispensing box may be wall mounted or rest on table.

772529

FUME EXTRACTORS

Industrial Air Filtration System

JET

Air filters attract oil mist, smoke, and dust generated during woodworking projects. Pleated fiber air filter is 99% effective at removing fumes, oil mist, and water vapor based on 8 to 10 micron size particles in the air. Fully enclosed ball bearing motor has overload protection for long, dependable service. Two-filter system with air diffuser disperses outgoing air into a broader pattern.

Includes remote control with 9V battery and mounting hardware.



Volts **HP**

486094 - 115 1/3

486095 - 115 3/4

486096 - 230 1

Filtair® 130 Portable Fume Extractor

MILLER



Portable fume extraction system designed specifically for welding. FilTek XL filter technology is specifically designed for welding fumes. Surface-loading MERV 15 filter is manually cleanable with dry compressed air. Service indicator alerts the operator when the filter needs to be cleaned. Particulate bin provides easy and convenient access. Front-panel-mounted air flow for ease of use. Airflow 132 CFM. 68.5 dBA @ 5'. Overall size 12"W x 23"H x 12"L. Weight 46 lbs.

Includes filter, 8' hose and 20' power cord.

566318

Downdraft Table Fume Extractor



FUMEDOG

Ideal for grinding or welding, this 400 FPM, powder-coated steel fume extractor has hinged side walls to accommodate larger parts, a spark trap, and spark baffles. Designed for 1-2 shifts of grinding, stick, MIG, or TIG welding. Can be converted from down-draft table to ground-mounted portable extractor with fume arm, to wall-mounted. The unique air stream filter cleaner allows for 5-6 times the filter life over traditional systems.

Airflow 400 FPM. Work Surface 36" x 42".

Includes castors, tool tray, removeable side and back walls and light kit.

412800

Downdraft Table Fume Extractor/Platen Table

FUMEDOG

This 400 FPM Platen table provides fast and easy clamping anywhere on the top and sides of the table and is able to use third-party 5/8" or 16mm clamps and tooling. Tabletop is made of cast steel and CNC machined for flatness. Designed to prevent weld splatter from sticking. Friction fit for tools. Eliminates unwanted moving or shifting of parts. Designed for 1-2 shifts of grinding, stick, MIG, or TIG welding. Air stream filter cleaner extends filter life 5-6 times over traditional systems.

Airflow 400 FPM. Static load 700 lbs. Hole diameter .625". Work surface 36" x 48" x 5/8".

412801





Filtair® MWX Series Fume Extractors

Miller

Powerful high volume system with a MERV 15 FilTek XL filtration is ideal where mobility is needed. Filters up to 95% of weld fume particulate. Easy-to-operate extraction arm adjustments so air can pass through with less resistance. Durable bellmouth-shaped hood features a convenient 360° rotation for unlimited positioning. Easy-read filter pressure gauge indicates when filter needs service. Particulate disposal bin provides easy and convenient access to empty out collected particulate. Large rear wheels and lockable swivel casters.

115V, 12.5 amps, 1 phase. Airflow 875 cfm. 70 dBA @ 5'. Overall size 31-3/4"W x 48"D x 34-3/4"H.

Disposable Extractor Filter handles allow easy replacement of dirty filter cartridge with less mess and downtime. Weight 238 lbs.

567120 - 7' arm

567121 - 10' arm

567122 - 12' arm

566315 - Disposable Filter

Self-Cleaning Extractor 1 min. cleaning cycle. Handle-release disposal drawer for easy particle clean out. Weight 300 lbs.

567123 - 7' arm

567124 - 10' arm

567125 - 12' arm

566316 - Self-cleaning Filter

Portable Welding Fume Extractor



FUMEDOG

This 1,200 CFM portable welding fume extractor includes a filter cleaning system and fume arm. It can be converted from a ground-mounted portable welding fume extractor to a wall-mounted weld fume collector out of the box. The unique air stream filter cleaner allows for 5-6 times the filter life over traditional reverse pulse systems depending on application.

120V, 1 phase. 1,200 CFM. Arm 8" dia. x 7'L. Overall size 40.5" x 26" x 31.5". Weight 215 lbs. (no arm).

Includes fume arm.

412820

AD350 Fume Extractor

Donaldson BOFA

Fume extraction and filtration system has been designed to provide a cost-effective solution for light duty applications. This compact and extremely quiet system is ideal for use in sign making workshops and light laser coding applications.

115-230V, 223 cfm. 60dBA. Size 14.8"W x 14.8"D x 23.2"H. Weight 88 lbs.

Includes pre-filter and combined filter.

Requires hose kit, sold separately.

416155



AD350 Fume Extractor Filter



Donaldson BOFA

For use with AD350 Fume Extractor.

273020 - Pre-Filter

273019 - Combined Filter

AD350 Hose Kit



Donaldson BOFA

For use with BOFA AD350 Fume Extractor.

273070

WELDING BENCHES, BOOTHS & CURTAINS

Welded Steel Work Bench



Pucel

Bench constructed of 12 gauge steel tops and legs, 16 gauge stringers and shelves (15-1/4"D), plus feature side and back stops. Top, stringer and legs are reinforced for extra strength. 3,000 lb. capacity.

683813

Welding Jig Table



Baileigh

Table features 1 solid mounting surface that has a flatness of .0025" and a Brinell hardness rating of between 140 and 160. Load capacity 2 tons. Mounting hole 28mm, spacing 100mm. Size 39"W x 39"D x 33.5"H. Weight 1,540 lbs. (shipping)

Includes table oiler, brush and cleaning stone.

222680

Welding Jig Table Accessory Kit



Baileigh

43-piece accessory kit is the ideal starter set for the Baileigh Industrial line of welding tables.

Includes 8 locating angle squares, 2 locating leveling rulers, 2 V-shape locating pieces, 6 wrench locking pins, 4 flat head quick locking pins, 2 fixed clamping pieces, 2 adjustable clamping pieces, two 45° inclined handles, 2 clamping pieces with base, 2 toggle clamps with base, 3 hexagonal wrenches, 2 nylon brushes, 2 oil stones and 2 oil pots.

222681

30FX ArcStation



Miller

The F-Series ArcStation has a unique folding design and convenient handle and wheels that make it easy to take to a job site or move around the shop or garage. 30" x 30" tabletop provides plenty of work surface for your projects. The 3/16" X-pattern steel tabletop allows for clamping.

Load capacity 500 lbs. Size 29"W x 29"H x 35"H. Weight 74 lbs.

Includes removable gun holder.

566323

60SX ArcStation Loaded



Miller

The 60SX Fully Loaded is perfect for the welder who needs a tough workbench for the fab shop or the home garage. 30" x 60" tabletop provides plenty of work surface for your projects. The 3/8" X-pattern steel tabletop allows for clamping. Adjustable leveling feet keep workbench rock-steady.

Load capacity 1,000 lbs. Size 35"W x 58"L x 35"H. Weight 318 lbs.

Includes 6" X-clamp, side shelf, tool chest, 5" vice with mount, weld curtain, gun holder, tool holder, clamp bar and 4 casters.

567140

3-Panel Welding Booth



FUMEDOG

Heavy duty, 12 gauge, powder coat construction. Three-sided fire resistant welding booth can be converted to 2-sided when placed in a row with other booths. Made in the USA. Booth size 60" x 60". Black powder coating.

412805 - 3 panels

412807 - Curtain, rod & hanger

ArcStation X-Clamp

Miller

6" clamp for use with X-pattern table top.

566322



Window-Front Welding Booth



Greene

structural Gray only.

Booth size 60"W x 60"D. Door panel 84"H. Side 76"H. Door size 27.5"W. Window size 30"W x 24"H.

Includes curtain.

Free Standing

433750 - Booth, 4-Sided

433751 - Add-On, 3-Sided

Wall-Mount

433752 - Booth, 3-Sided

433753 - Add-On, 2-Sided

All-Steel Arc Welding Bench

Pucel

Top working surface is made of 12 ga. steel. Available with window-type, glare-proof shield for instructional purposes, or with solid shield. Drawer is supplied on both models. Gray.

Bench size 36"L x 36"D x 34"H. 34" from table top to top of shield.

683938 - Solid Shields

684005 - See-thru Shields



You-Weld Welding Jig Table



Baileigh

Made from thick 4 gauge plate steel and includes 16 mm fixturing holes. Weld-together interlocking design with full cross brace structure underneath ensures it will remain flat under high temperatures. ***Ships unassembled.***

222670 - 36"W x 24"D x 36"H

222671 - 72"W x 36"D x 36"H

222672 - 48"W x 48"D x 36"H

Arc Welding Table



Greene

All welded construction of heavy 11 gauge steel with bar grate top. Structural Gray color. Work surface height 34". Bar grate work surface 1-1/2" x 3/16".

Includes floor anchor pads.

433650 - 30"W x 24"D x 33.75"H

433651 - 36"W x 24"D x 33.75"H

433652 - 48"W x 24"D x 33.75"H

General-Purpose Welding Table



Badass

Badass heavy duty welding tables are built to withstand all-purpose welding and fabrication work, but are not designed for precision welding applications. They feature a hot-rolled plate-steel 1/2" thick top, powder-coated frame built with heavy-duty structural tubing, and a bottom shelf for storage.

Top 1/2" T hot-rolled plate steel. Heavy duty structural steel tubing with gloss black powder coating. Frame height 36".

Bench

222300 - 48"W x 36"D 275 lbs.

222302 - 72"W x 36"D 550 lbs.

222304 - 96"W x 48"D 900 lbs.

Bench with Casters ***Includes*** Four 6" dia. x 2" casters, 2 locking.

222301 - 48"W x 36"D 285 lbs.

222303 - 72"W x 36"D 560 lbs.

222305 - 96"W x 48"D 910 lbs.

Alpha Welding Table



Strong Hand Tools

Heavy-duty table features precision-ground steel plates that are CNC machined with 5/8" holes in a 2" grid pattern for locating, positioning, and mounting clamps and accessories. Table plate can be removed and flipped 180° to expose a new working surface if the top side has been damaged or worn down, and plates can be reconfigured to expand the width of the table for larger projects.

Heat-treated Steel. Capacity 1,500 lbs./leg. Tabletop Side Height 6". Table Surface Height 36.3". Table Size 48" x 48". Assembly required.

Includes floor anchor pads.

886116 - Adjustable height & castors 886115 - Bench

Rhino Mobile Welding Cart



Strong Hand Tools

Features a replaceable heavy-duty tabletop that accepts all 5/8" diameter fixturing components. Surface ground for flatness on both sides. Heat-treated for wear and spatter resistance.

Hole Diameter 0.625" -.628. Hole Spacing 2.000" ±0.001. Table Flatness ±0.015 per 24" x 24". Plate Thickness 0.630" ±0.004. Capacity 1,500 lbs. Tabletop Frame Height 4". Table Surface Height 36".

Includes shelves, racks, pegboard panel, 66-piece fixture kit, locking casters and leveling feet. Assembly required.

886120 - 48" x 30" 510 lbs.

886121 - 60" x 30" 634 lbs.

Arc Welding Bench With Drawer



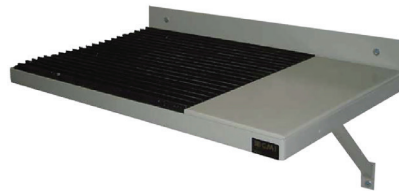
Pucel

Built for rugged service. The 12 gauge top has side and backstops. Legs are double formed, embossed 14 gauge steel. Shelf is divided into three equal sections for the storage of welding rods. Gray.

Size 36"L x 36"D x 34"H. Weight 140 lbs.

683930

Wall-Mount Welding Table



Greene

Structural Gray color.
Table size 24" x 36" x 3/8" T.

433647

MAX Slotted Welding Table



Strong Hand Tools

Slotted, single-sided, heavy-duty table features 1.7" gaps between the top plates, providing extra versatility for clamping tools or pliers using T-slot adapters, or sliding a channel on the open slot edges as clamping surfaces. Patented bushing design allows you to remove, reposition, realign, and reverse the table plates.

Hole Diameter 0.625" + .002/- .000. Hole Spacing 2.000" ±0.001. Table Flatness ±0.005 per 24" x 24". Plate Thickness 0.630" ±0.004. Capacity 1,500 lbs./leg. Slot Width 1.7". Tabletop Side Height 6.25". Table Surface Height 36".

Assembly required.

886100 - 4' x 4' 548 lbs.

886101 - 6-1/2' x 3' 819 lbs.

886102 - 6-1/2' x 4' 906 lbs.

Heavy-Duty Gas Welding Bench



Pucel

Heavy-gauge steel bench features a shelf for rod storage. Gray.
Overall size 36"W x 36"D x 34"H.

Requires 32 firebricks, sold separately.

683871 - Bench

683670 - Drawers

Fire Bricks



Greene

Overall size: 2-1/4"H x 4-1/2"W x 9"L.

433800 - 13 Count

433801 - 32 Count

433802 - 54 Count

4-Station Gas Welding Table



Greene

All-welded construction of heavy 3/16" thick steel in Structural Gray. Gas distribution tower meets safety regulations. Fully grouted firebrick work surface. Four torch holders. Floor anchor pads. USA made.
Table size 50"W x 50"D x 34"H. Side shield 24"H.

Includes two 1/2" ball valves and two 1-way check valves on tower inlet.

433640

Gas Welding Bench



Greene

Brick surface gas welding table. All welded heavy gauge steel construction.
Color: Structural Gray.
Size 36"L x 36"W x 34"H.

Requires 32 fire bricks, sold separately.

433805 - Bench

433806 - 32-brick set

Brick Top Gas Welding Table



Greene

Gas welding table is made from heavy 11-gauge steel. Work surface is 3/8" made from steel with grouted firebrick and includes raised grounding rails.
Table size 50"L x 25"W x 33.75"H.
Structural Gray color.

Includes floor anchor pads.

433645

Welding Layout Table



Greene

Made from heavy 11 gauge steel, this all-welded layout table has a grouted firebrick work surface that includes raised grounding rails. The 3/8" steel top is reinforced to prevent warping. Structural Gray.
Overall size 91"W x 41"D x 33.75"H.

Includes floor anchor pads.

433649

Hand Grinding Station



Greene

Made from 11 gauge steel and all welded. Large work surface is replaceable steel grate. You'll find a 5" tapered air vacuum inlet running along the back of the bench. A hinged, locking door on front allows for easy cleanup. A 110V outlet on front leg is wired to a 6' cord and plug. Station has a 5" outlet.

Includes floor anchor pads.

433770

Protect-O-Screen® HD™ Welding Screen



Steiner

Rugged and flexible welding screen protects users from welding sparks, spatter, and UV flash. The patented modular framing system offers flexibility with the addition, removal, replacement, and rearrangement of panels. Sturdy steel square tube frame eliminates slipping and twisting.

	COLOR	SIZE
885345	- Dark Green	4'x6'
885346	- Dark Green	6'x6'
885347	- Dark Green	6'x8'
885348	- Dark Green	6'x10'
885349	- Orange	4'x6'
885350	- Orange	6'x6'
885351	- Orange	6'x8'
885352	- Orange	6'x10'

Protect-O-Screen® HD™ Welding Screen Accessories



885353

Steiner

Rugged and flexible welding screen protects users from welding sparks, spatter, and UV flash. The patented modular framing system offers flexibility with the addition, removal, replacement, and rearrangement of panels. Sturdy steel square tube frame eliminates slipping and twisting.

885353 - 2-Panel Welding Screen Connector

885354 - 3-Panel Welding Screen Connector

885355 - 4-Panel Welding Screen Connector

885356 - Swivel Caster with 2" rubber Wheel

885357 - Single Caster Leg with 2" Rubber Wheel

885358 - Swivel Locking Caster with 2" Rubber Wheel



885358

ArcView™ Flame Retardant Tinted Transparent Vinyl Welding Curtain

Steiner

Tinted transparent 14 mil. vinyl curtains provide protection from harmful UV rays and reduce the visible flash when visibility is required. Blocks most UV radiation and is flame, water and mildew resistant. 3/8" brass grommets on all four sides, 12" apart. Meets California Fire Marshal requirements.

WARNING: Tinted transparent vinyl screens provide protection for casual passerby only and are not intended as a substitute for normal eye protection for close or long-term viewing. The user must wear protective eyewear suitable for the application.

COLOR	SIZE
885321 - Green	4'x6'
885323 - Green	6'x6'
885324 - Green	6'x8'
885320 - Green	6'x10'
885326 - Orange	4'x6'
885328 - Orange	6'x6'
885329 - Orange	6'x8'
885325 - Orange	6'x10'

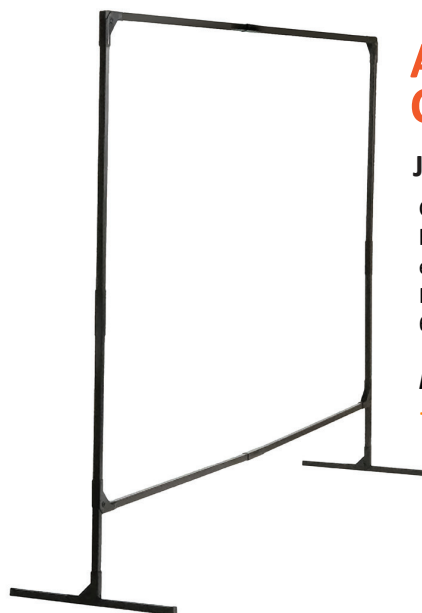


Welding Curtain Metal Hooks

Steiner

Hang welding curtains from cable or pipe up to 2" dia. Galvanized steel.

885340



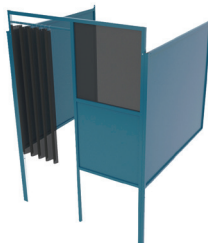
Adjustable Welding Curtain Frame

Jackson

Constructed with 19-gauge steel tubing and bolted corner clamps. Black powder-coated enamel finish is rust and abrasion resistant. Pre-drilled for casters. Adjusts from 6' x 6' to 6' x 8'.

Includes brackets, hardware and lacing ties.

772410



**DESIGNING A
WELDING CLASSROOM**

READ NOW

WELDING CLOTHES



Welding Starter Supply Package

Midwest

Includes safety glasses, auto-darkening welding helmet, face shield with shade 5 IR window, large 30"L leather jacket, 24"L leather apron bib-style, large welding gloves, medium beanie, adjustable welding curtain frame, 6' x 6' orange welding curtain and fire/first aid emergency blanket.

558501

Weldmite™ Cotton Bib Apron



Steiner

A protective clothing option that is lighter and more comfortable than leather for applications not requiring leather. Made from 12 oz. permanently flame retardant fabric, the 100% cotton will retain its flame retardant properties even after repeat washings. These bucktan garments are sewn from full-cut patterns and offer adjustable neck and waist straps.

885125 - 24"x36"

Weldlite™ Flame Retardant Jacket



Steiner

Weldlite™ Flame Retardant Jacket

885132 - Medium

885133 - Large

885134 - X-Large

885131 - 2 X-Large

Weldlite™ Welding Jacket



Steiner

Protection for light welding and sparks. Leather reinforced, black anodized non-reflective snaps at adjustable wrists and stand-up/roll-down Mandarin collar. Weldlite™ fabric is made from 100% cotton, anti-static, rot- and mildew-resistant, flame retardant, and meets ASTM D6413-10.

885146 - Small

885147 - Medium

885148 - Large

885149 - X-Large

Leather Leggings with Spats

Steiner

Protect your lower legs and shoes with 12" leather leggings featuring a hook and loop fastener to hold leggings in place and 9" leather shoe protector

885195



Leather Spats

Steiner

Full protection for foot and ankle. 5"H spats fasten by 3 adjustable straps on the ankle and 1 on the instep.

885194



Weld-Rite™ Leather Jacket

Steiner

Weld-Cool™ side split cowhide jackets feature underarm ventilation and riveted open seam upper back to increase air circulation and provide cool comfort in warm environments. Strong, flexible leather resists cuts, sparks and slag. Reinforced, non-reflective snaps and Kevlar® stitched seams. Satin lined shoulders and upper arm. Stand-up/roll down leather collar snaps securely in place to protect neck. Adjustable waist cinch straps for comfortable tapered fit. Soap stone holder on each upper arm.

26" L

885400 - Medium

885401 - Large

885402 - X-Large

885403 - 2X-Large

30" L

885405 - Medium

885406 - Large

885407 - X-Large

885408 - 2 X-Large



BACK SIDE



Weld-Rite™ Leather Bib Apron

Steiner

Quality crafted from premium side split brown cowhide with Kevlar® stitched seams, rivet reinforced stress points and adjustable nylon straps with quick-release buckle. 2-compartment chest pocket.

885412 - 24" W x 36" L

885413 - 24" W x 36" L



Weld-Rite™ Leather Split-leg Apron

Steiner

Quality crafted from premium side split brown cowhide with Kevlar® stitched seams, rivet reinforced stress points and adjustable nylon straps with quick-release buckle. 2-compartment chest pocket and adjustable leg straps.

885415 - 24" W x 42" L

885416 - 24" W x 48" L



Weld-Rite™ 18" Leather Sleeves

Steiner

Premium side split cowhide sleeves fit easily into welding glove cuffs to protect upper arms. Kevlar® stitching, adjustable leather strap on bicep and rivet reinforced seams and stress points. Snaps at wrist.

885419 - QTY 2



Weld-Rite™ 23" Leather Sleeves

Steiner

Premium side split cowhide sleeves fit easily into welding glove cuffs to protect upper arms. Kevlar® stitching, adjustable leather neck strap and rivet reinforced seams and stress points. Snaps at wrist.

885420 - QTY 2



WELDING GLOVES

Triple Layer Wool Lined Premium Stick Welding Gloves

Steiner

Heat Resistor triple layer consists of premium side split brown cowhide outer layer, aluminized Mylar inner layer and wool insulated bottom layer. Flame resistant Kevlar® thread for added strength.

885040



Premium Cowhide Stick Welding Gloves

Steiner

Premium red side split cowhide. ThermoCore™ insulation with full cotton lining. Straight thumb with reinforced thumb and palm. Kevlar® sewn. 14"L.

885090



Foam-lined Welding Gloves

Steiner

Premium brown side split cowhide. ThermoCore™ insulation with full cotton lining. Double reinforced wing thumb, saddle, and palm. Kevlar® sewn.

885220



Pigskin Welding Gloves

Forney

409922



Economy Welding Gloves

Steiner

Gray shoulder split cowhide gloves with full cotton lining. Fully welted.

885050



Triple Layer Lined Stick Welding Gloves

Steiner

Unique Natural Thumb™ design reduces fatigue, while Heat Resistor™ triple layer lining increases heat protection. ThermoCore™ foam insulated with full cotton lining for added comfort. Double reinforced thumb, saddle and palm. Flame resistant Kevlar® thread. Gold cowhide.

885015



Premium-grain Pigskin MIG Gloves



Steiner

Premium reverse grain pigskin MIG welding gloves with unlined palm, ThermoCore™ foam back and 5" split pigskin cuff.

885010 - Medium

885011 - Large

885012 - X-Large

MIG Welding Gloves



Miller

Select-grade leather with unprecedented comfort and performance. Lined gloves with dual padded palm for added comfort. Fleece insulated palm, foam insulated back. Original wrap-around keystone thumb design for exceptional dexterity and comfort.

566263

Premium TIG Welding Gloves



Miller

Premium goat grain leather. Completely unlined for superior flexibility and dexterity. Triple padded palm for added comfort. Sewn with 100% flame-resistant Kevlar® thread for maximum seam strength.

566264

Split Deerskin TIG Gloves



Steiner

Unlined split deerskin gloves with straight thumb and 2" cuff. Kevlar® stitched.

885025

TIG Welding Gloves



Steiner

Unlined, Kevlar®-stitched sheepskin gloves. Sensi-TIG™ seamless index finger and straight thumb. 4" gray cuff.

885027 - Medium

885028 - Large

885029 - X-Large

FOUNDRY TOOLS & SUPPLIES

Bench Soldering Furnace No. 101



Johnson Gas

A powerful, efficient and economical bench furnace made for heating soldering coppers up to 12 lbs. per pair, heat-treating, tempering, annealing or case-hardening any carbon steel tools or small metal parts such as dies, taps, reamers, chisels, gears, etc. No blower is needed, which eliminates use of a muffle. Equipped with shut-off valve and pilot light. Firebox forms a rest and protects points of coppers. Johnson patented, curved shaped hood forces return blast over parts being treated. A baffle plate, which partly closes front of furnace, is furnished. Hood and bottom lined with heavy refractory.

Unit size 14"L x 7-3/8"H. Firebox 3-3/4" x 4-1/2" x 5-1/2". Firebox opening 4-1/2" x 2-3/4". Gas connect pipe size 3/8". Burners 2. Gas consumed 26,000 BTU per hour per burner.

486134

Complete Relining Kit for 101

486201

Top Pour Graphite Crucible



Bay State

	Height	Bilge Diameter
231670	7-1/8"	5-7/8"
231804	8-1/16"	6-9/16"
231938	9-1/4"	7-1/2"
232072	10-5/16"	8-3/8"
232206	11-1/2"	9-5/16"

Bottom Pour Crucible



Bay State

	Height	Bilge Diameter
231871	8-1/16"	6-9/16"
232005	9-1/4"	7-1/2"

Petrobond Oil Bonded Sand



Midwest

Oil-bonded sand pre-mixed in a bucket to cast highly-detailed pieces of gold, silver, bronze, copper and more.

531271

Mold Parting Powder



Lancaster Mold

Prevents the casting sand sticking to the pattern and allows the pattern to be more easily removed from the sand as the mold is made.

531200

Fire Bricks



Greene

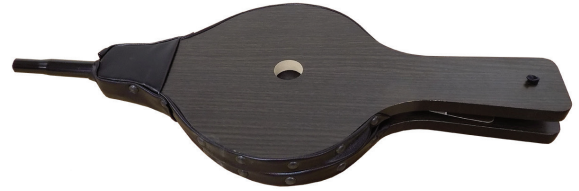
Overall size: 2-1/4"H x 4-1/2"W x 9"L.

433800 - QTY 13

433801 - QTY 32

433802 - QTY 54

19" Bellows



Panacea

Chrome-tip 19" bellows for school molders. Made of hardwood boards and a combination of leather and vinyl with leather. Secured with tacks.

943204

Molder's Shovel



Ridgid

Solid shank tool. 14 ga. - 9-3/4" x 12" sq. point blade with 27" long D-handle. Lacquered ash handle, double riveted to blade socket.

692630

Bench Rammer



Wood Crafters

Hard maple.

475000

Z-Flex Plus™ Treated Fiberglass High Heat Mittens



Steiner

35 oz. highly texturized silica yarn treated to withstand temperatures up to 2000°F. Moderate abrasion resistance with full 11 oz. wool insulated lining.

885110

Welder's Tongs



Lansing Forge

Straight Lip

960273 - 18"L

960340 - 24"L

Gad

960407 - 24"L

Round Holding

960072 - 3/8" x 20"L

960139 - 1/2" x 20"L

960206 - 3/4" x 20"L

Single Pickup

960005 - 24"L

Z-Flex Plus™ Treated Fiberglass High Heat Gloves



Steiner

35 oz. highly texturized silica yarn treated to withstand temperatures up to 2000°F. Moderate abrasion resistance with full 11 oz. wool insulated lining.

885109